



PORT OF SHEERNESS LIMITED

GARY DOYLE
Group Harbour Master

River Medway

1064-1-22
LIMEHOUSE WHARF

SCALE 1:500 at A1

DEPTHS
Depths are in metres and are reduced to chart datum being 2.74m below Ordnance Datum (Newlyn), which is approximately the level of Lowest Astronomical Tide.

HEIGHTS
Heights are in metres. Underlined figures show heights in meters above Chart Datum.

DEPTH COLOUR TABLE

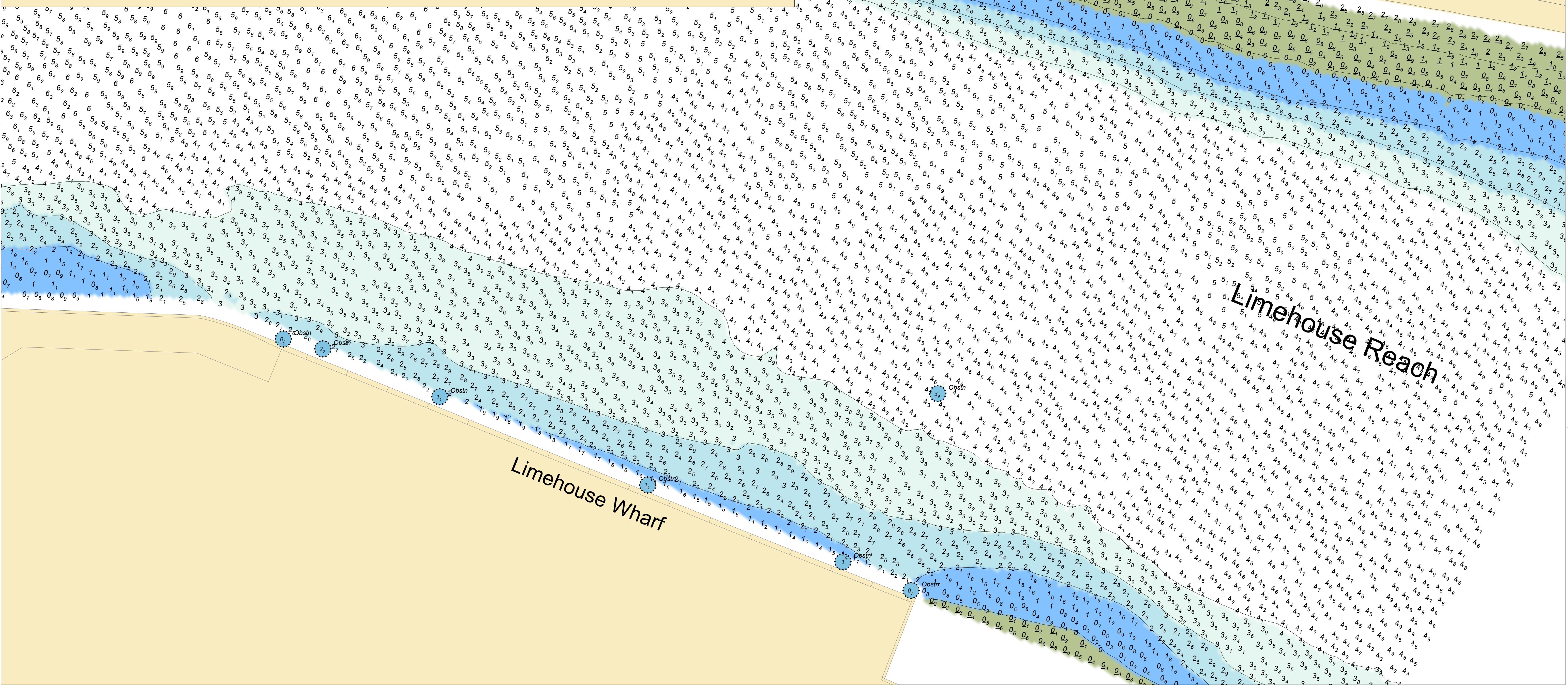
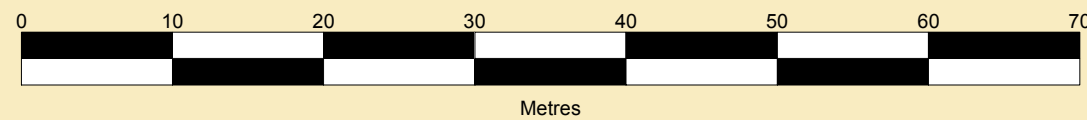
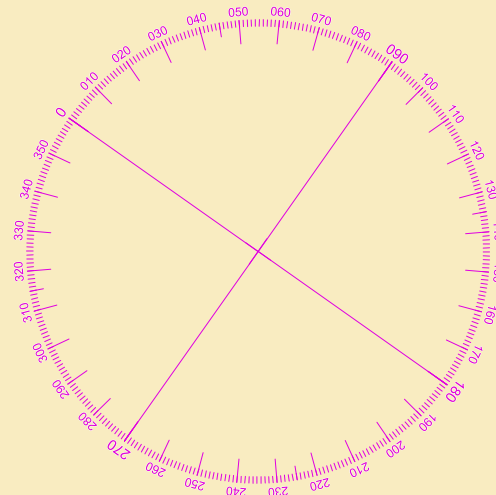
Green	(-1.5m,0m)
Light Blue	(0m,2m)
Medium Blue	(2m,3m)
Dark Blue	(3m,4m)
White	(>=4m)

POSITIONS
Positions are referred to OSGB36 National Grid Datum.

Surveyed by: NM/WLH
 Processed by: NM
 Checked by: NM
 Surveyed: 30th June 2022
 Issued: 6th July 2022

NOTES
While every care has been taken in the preparation of the information relating to the soundings shown on this chart, PEEL PORTS MEDWAY make no warranty as to the accuracy and will not accept any responsibility whatsoever arising from errors and omissions or for any consequence arising therefrom.

TOPOGRAPHY
The shore features on this chart are based largely on Ordnance Survey digital mapping data with permission of HMSO. © Crown Copyright 2022. Peel Licence Number 100018033.



Limehouse Wharf

Limehouse Reach