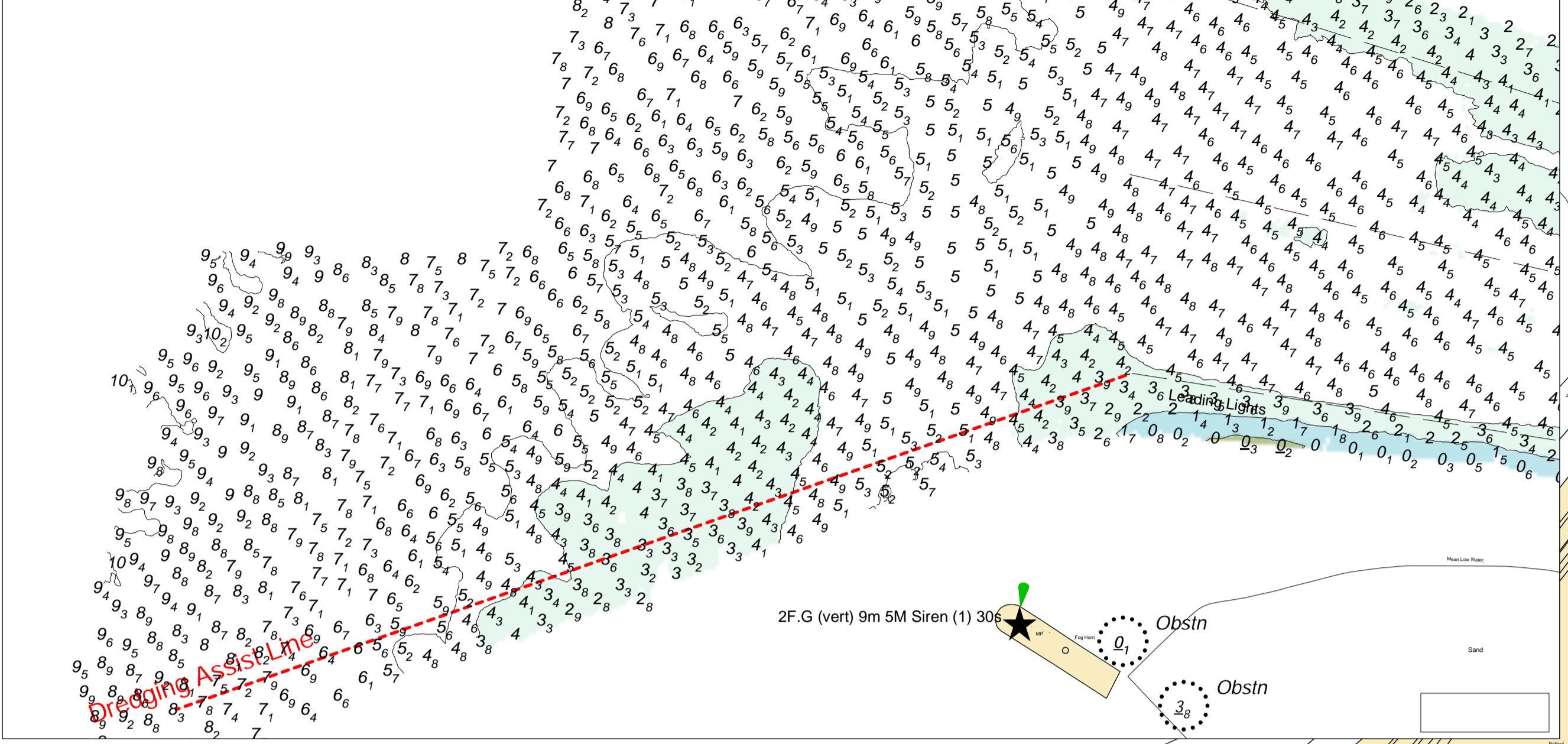


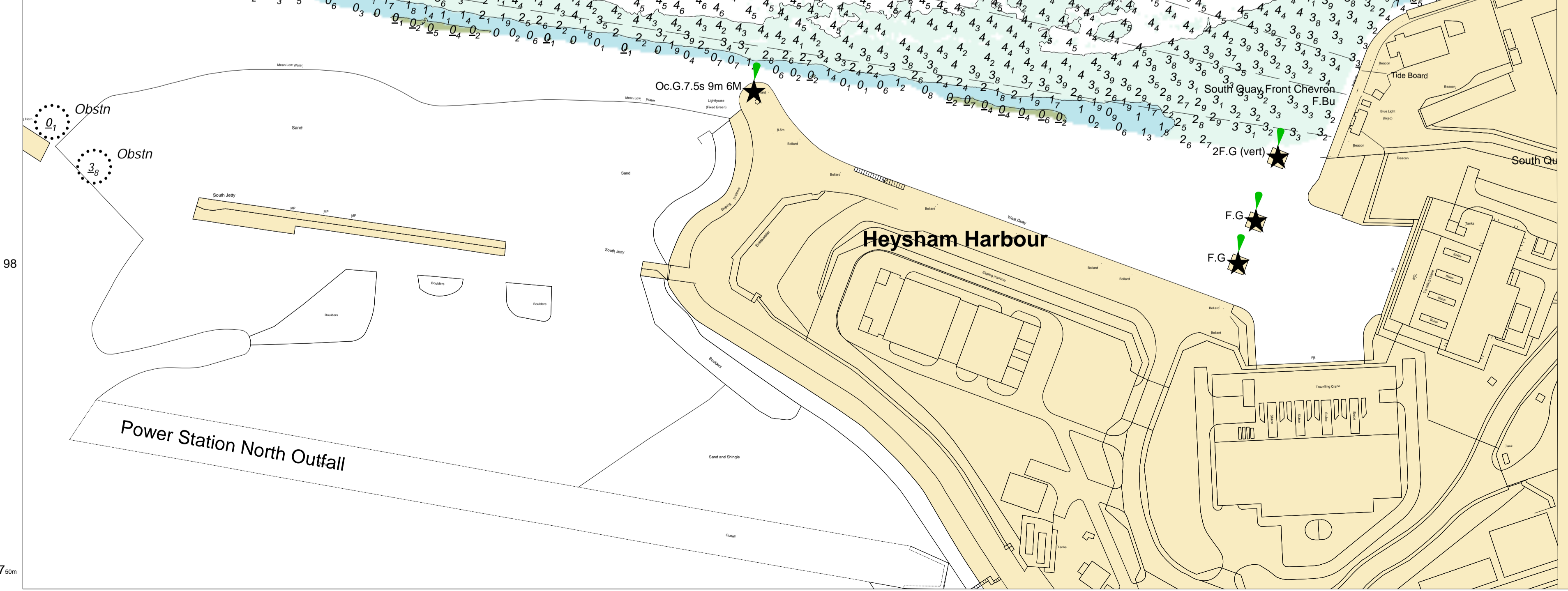
Approaches to Harbour Entrance Insert



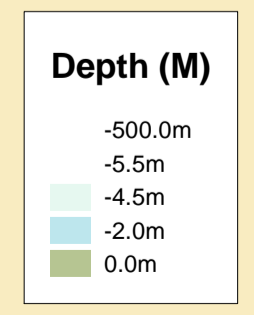
Heysham Port



Heysham Harbour



HEYSHAM PORT LTD
 Gary Doyle
 Group Harbour Master
Heysham Harbour
Heysham Harbour
and Entrance Channel
HM004_1_2023_007



DEPTHS
 Depths are in metres and are reduced to chart datum being 4.90m below Ordnance Datum (Newlyn), which is approximately the level of Lowest Astronomical Tide.

HEIGHTS
 Heights are in metres. Underlined figures show heights above Chart Datum.

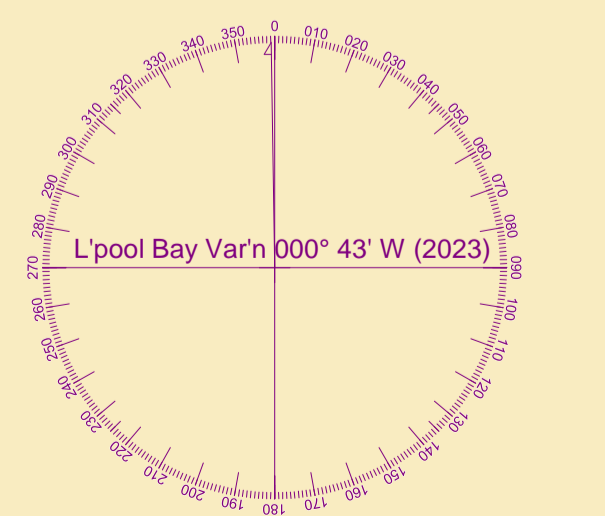
POSITIONS
 Positions are referred to OSGB36 National Grid Datum.

UKHO & NTMS
 When using this chart please refer to UKHO Admiralty Publications and also local Notice to Mariners and Navigational Warnings.

FLATS & SANDBANKS
CAUTION OWING TO FREQUENT CHANGES IN DEPTHS AND POSITIONS OF FLATS AND SANDBANKS THIS CHART SHOULD BE USED WITH CAUTION.

TOPOGRAPHY
 The shore features on this chart are based largely on Ordnance Survey digital mapping data with permission of HMSO. © Crown Copyright 2023. Peel Licence Number 100018033.

Surveyed by:	BWL
Processed by:	BWL
Checked by:	RK
Surveyed:	7th August 2023
Issued:	10th August 2023



SCALE 1:1250 at A1

