



MERSEY DOCKS AND HARBOUR COMPANY LTD

Gary Doyle
Group Harbour Master

River Mersey

**LPR002_9_2023_001
Middle Deep Spoil
Ground**

DEPTHS
Depths are in metres and are reduced to chart datum being 4.93m below Ordnance Datum (Newlyn), which is approximately the level of Lowest Astronomical Tide.

HEIGHTS
Heights are in metres. Underlined figures show heights above Chart Datum.

POSITIONS
Positions are referred to OSGB36 National Grid Datum.

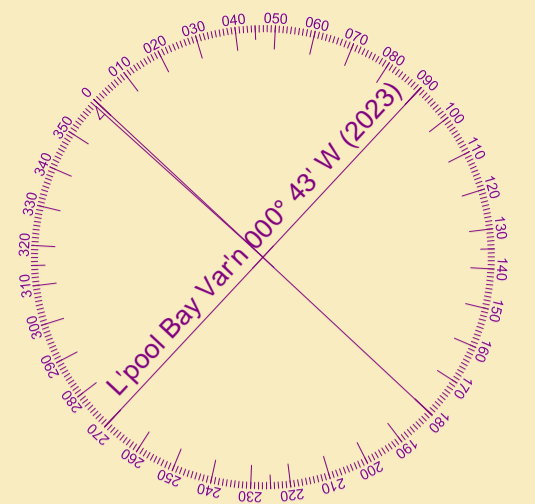
UKHO & NTMS

When using this chart please refer to UKHO Admiralty Publications and also local Notice to Mariners and Navigational Warnings.

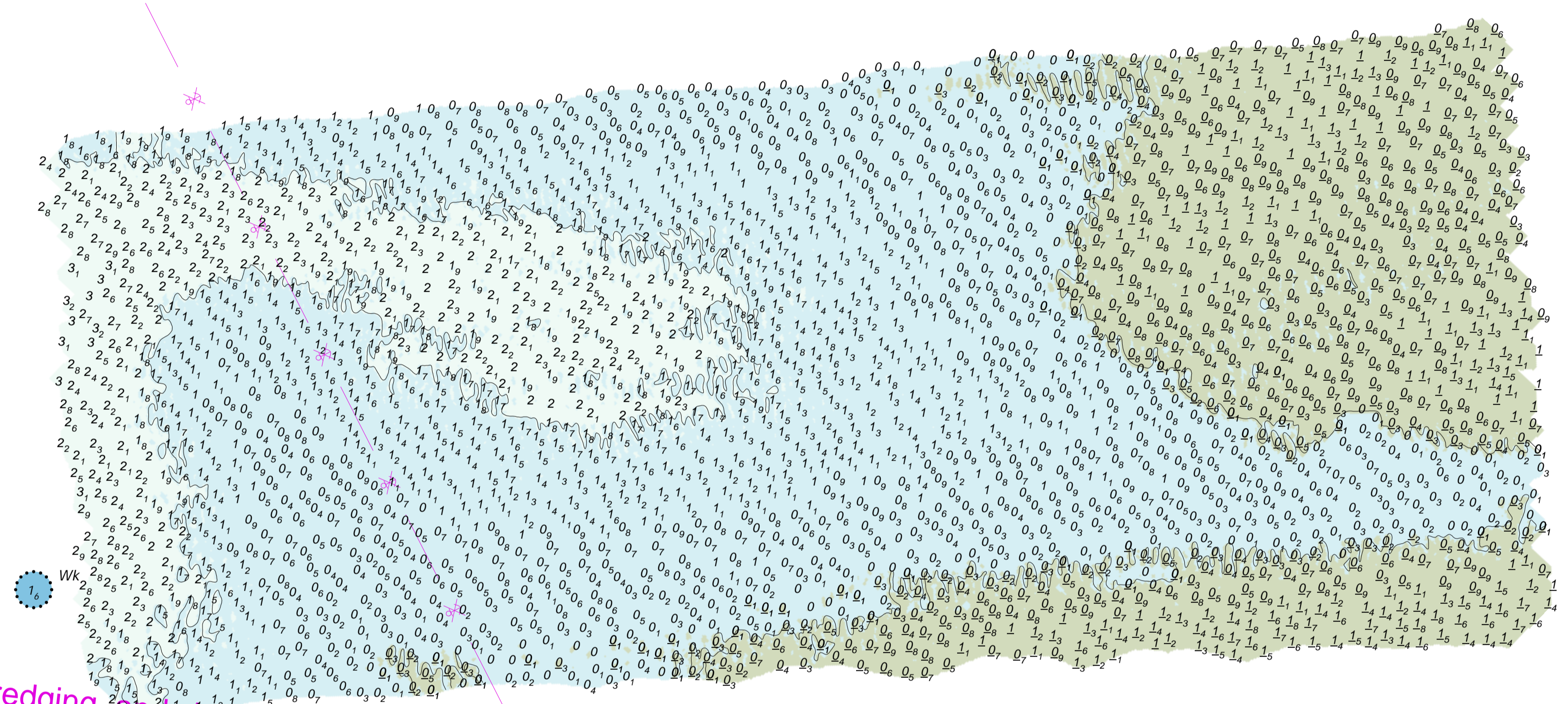
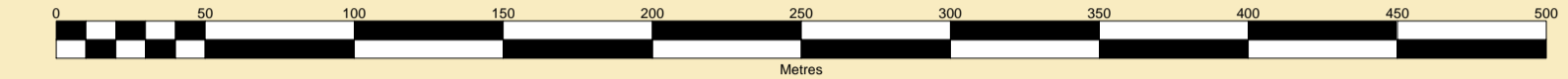
Surveyed by: BWL
Processed by: BWL
Checked by: NM
Surveyed: 23rd April 2023
Issued: 28th April 2023

TOPOGRAPHY
The shore features on this chart are based largely on Ordnance Survey digital mapping data with permission of HMSO. © Crown Copyright 2023. Peel Licence Number 100018033.

FLATS & SANDBANKS
CAUTION OWING TO FREQUENT CHANGES IN DEPTHS AND POSITIONS OF FLATS AND SANDBANKS THIS CHART SHOULD BE USED WITH CAUTION.



SCALE 1:2500 at A1



Dredging and Anchoring Prohibited

