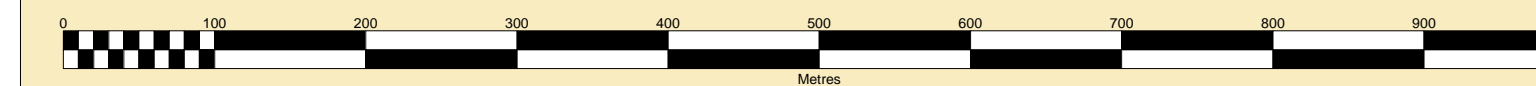




**MERSEY DOCKS AND HARBOUR COMPANY LTD**  
GARY DOYLE  
Group Harbour Master

**Rock Channel**  
**LPC006\_5\_2023\_001**  
**Rock Channel**

SCALE 1:5000 at A0



**DEPTHS**  
Depths are in metres and are reduced to chart datum being 4.93m below Ordnance Datum (Newlyn), which is approximately the level of Lowest Astronomical Tide.

**HEIGHTS**  
Heights are in metres. Underlined figures show heights above Chart Datum.

**DEPTH COLOUR TABLE**

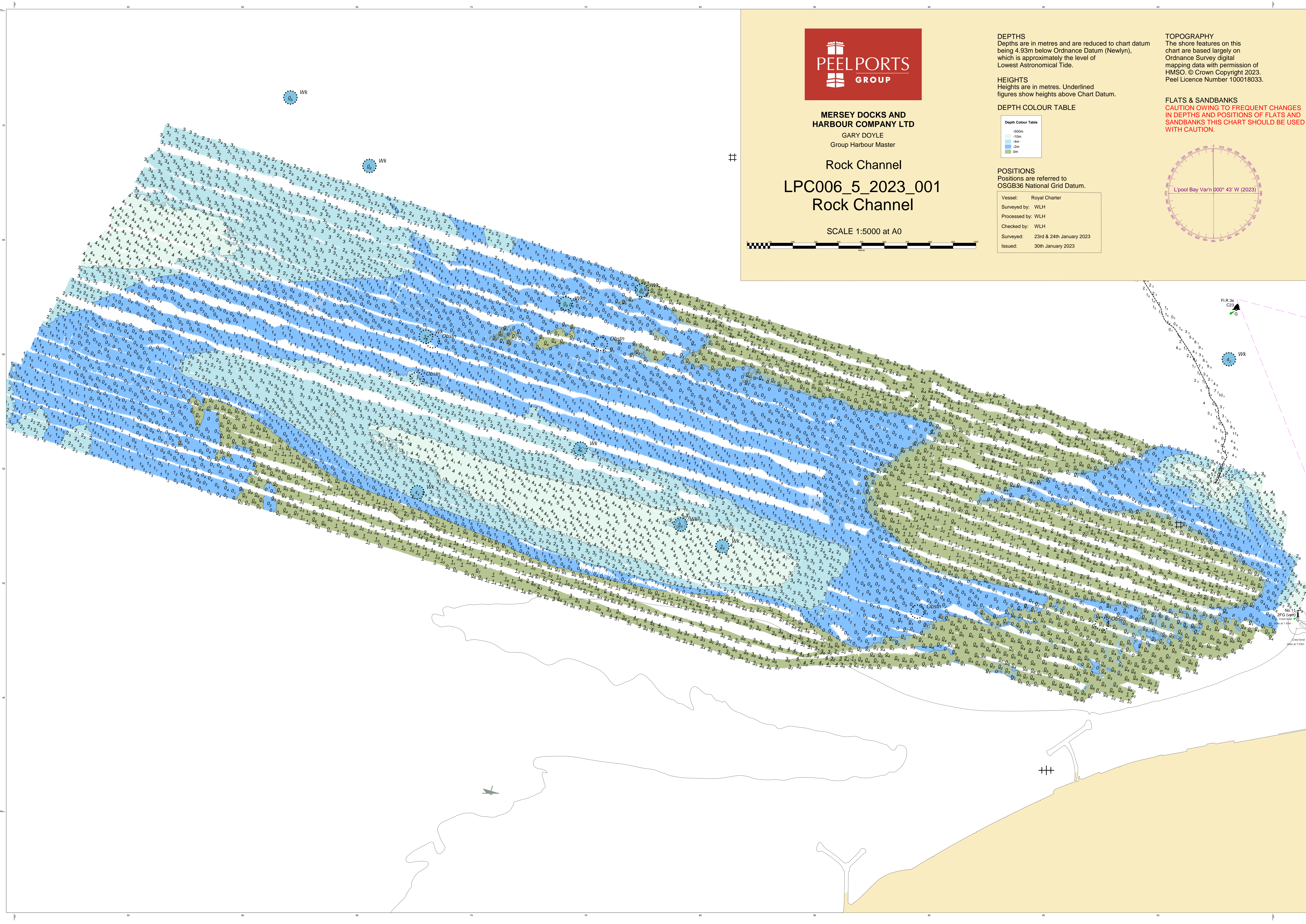
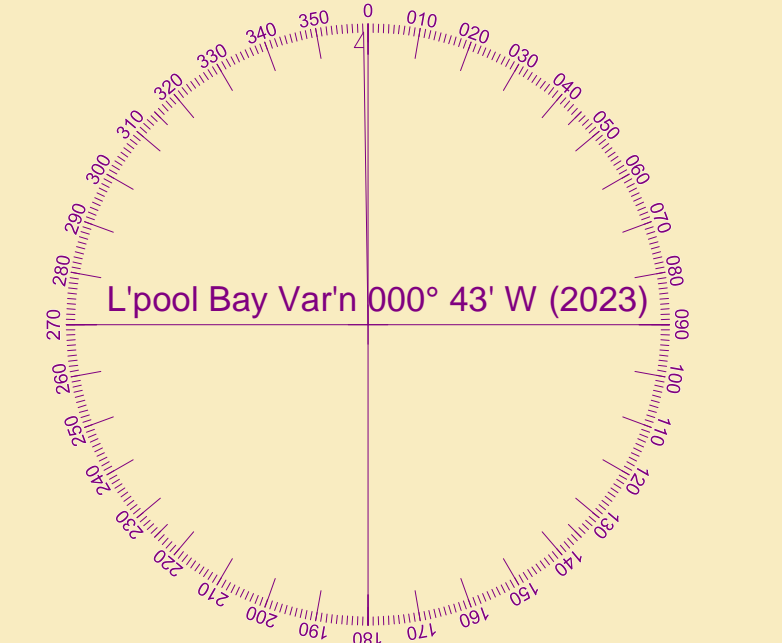
Depth Colour Table
-500m
-10m
-4m
-2m
0m

**POSITIONS**  
Positions are referred to OSGB36 National Grid Datum.

Vessel:	Royal Charter
Surveyed by:	WLH
Processed by:	WLH
Checked by:	WLH
Surveyed:	23rd & 24th January 2023
Issued:	30th January 2023

**TOPOGRAPHY**  
The shore features on this chart are based largely on Ordnance Survey digital mapping data with permission of HMSO. © Crown Copyright 2023. Peel Licence Number 100018033.

**FLATS & SANDBANKS**  
**CAUTION OWING TO FREQUENT CHANGES IN DEPTHS AND POSITIONS OF FLATS AND SANDBANKS THIS CHART SHOULD BE USED WITH CAUTION.**



FLR.3s  
C2  
G

Wk

Wk

Wk

Wk

Wk

Wk

Wk

Wk

Wk

Wk

No 11  
27G (over)  
Chart No 11  
Scale 1:5000

Chart datum  
Newlyn 4.93m