



**MERSEY DOCKS AND HARBOUR COMPANY LTD**

Gary Doyle  
Group Harbour Master

River Mersey

**DEPTHS**  
Depths are in metres and are reduced to chart datum being 4.93m below Ordnance Datum (Newlyn), which is approximately the level of Lowest Astronomical Tide.

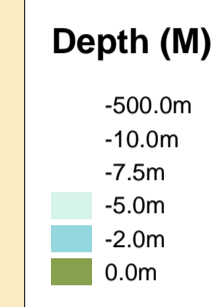
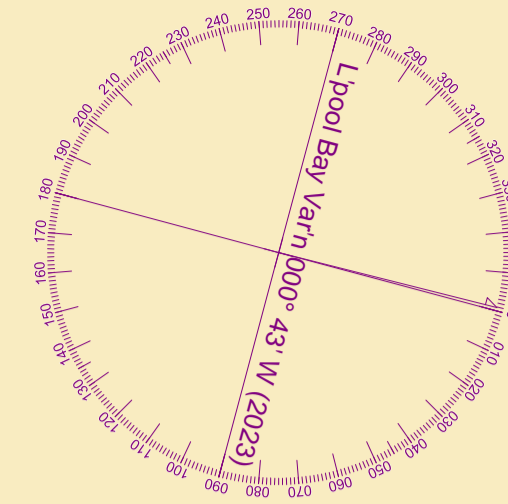
**HEIGHTS**  
Heights are in metres. Underlined figures show heights above Chart Datum.

**POSITIONS**  
Positions are referred to OSGB36 National Grid Datum.

**UKHO & NTMS**  
When using this chart please refer to UKHO Admiralty Publications and also local Notice to Mariners and Navigational Warnings.

**TOPOGRAPHY**  
The shore features on this chart are based largely on Ordnance Survey digital mapping data with permission of HMSO. © Crown Copyright 2023. Peel Licence Number 100018033.

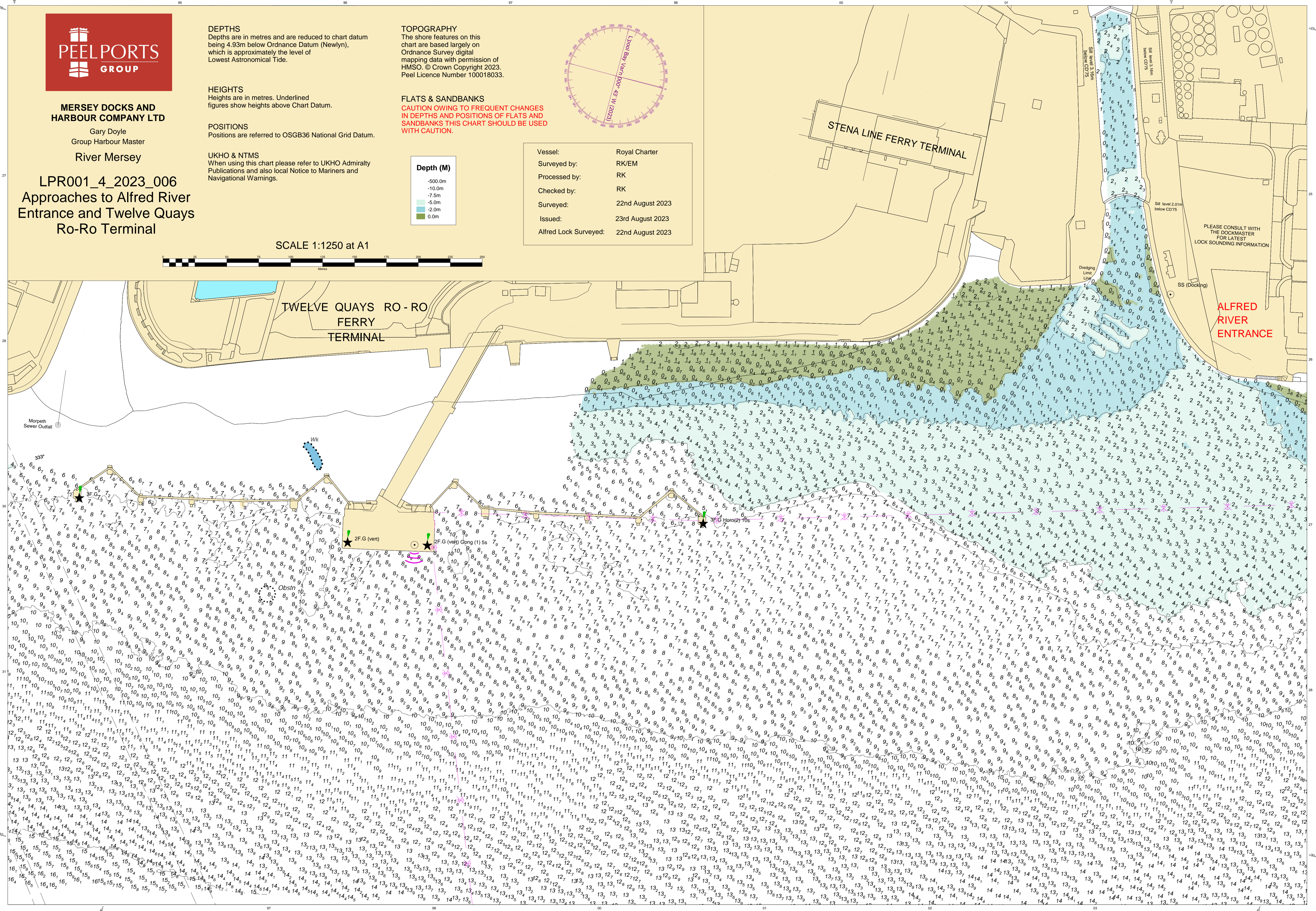
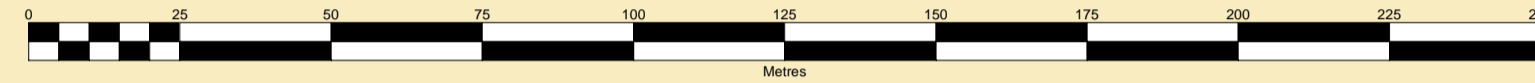
**FLATS & SANDBANKS**  
**CAUTION OWING TO FREQUENT CHANGES IN DEPTHS AND POSITIONS OF FLATS AND SANDBANKS THIS CHART SHOULD BE USED WITH CAUTION.**



Vessel:	Royal Charter
Surveyed by:	RK/EM
Processed by:	RK
Checked by:	RK
Surveyed:	22nd August 2023
Issued:	23rd August 2023
Alfred Lock Surveyed:	22nd August 2023

**LPR001\_4\_2023\_006**  
**Approaches to Alfred River Entrance and Twelve Quays Ro-Ro Terminal**

SCALE 1:1250 at A1



**ALFRED RIVER ENTRANCE**

**TWELVE QUAYS RO-RO FERRY TERMINAL**

**STENA LINE FERRY TERMINAL**

PLEASE CONSULT WITH THE DOCKMASTER FOR LATEST LOCK SOUNDING INFORMATION

Morpeth Sewer Outfall

Wk

Obs'n

2F.G (vert)

2F.G (vert)

Gong (1) 5s

5 F.G (Horn) 20s

Sill level 2.01m below CD 75

Dredging Limit

SS (Docking)