



Peel Ports Great Yarmouth

Port Waste Management Plan 2019

Introduction

Regulations (*see Appendix A*) require that Great Yarmouth has a Plan to ensure facilities are made available for the reception of prescribed waste from ships using the port and particularly Berths under control of the Port Authority.

This Waste Management Plan (the Plan) is produced by Great Yarmouth Port Company on behalf of the Port Authority to meet these requirements.

The Plan is intended for use by ship Agents and others arranging disposal of waste generated from ships using the port.

The Plan has been developed following guidance contained in MGN 563 (M+F), Merchant Shipping and Fishing Vessel (Port Waste Reception Facilities) Regulations 2003 as amended and the associated Guide to Good Practice.

Development of the Plan

Consultation Process

The Plan 1998 followed initial Consultation with Great Yarmouth Port Users' Association (representing Berth Owners, Operators and Service Providers); Great Yarmouth and District Inshore Fisherman's Federation (representing all fishing vessels on Fisherman's Wharf); Great Yarmouth Borough Council (Estates Department) and Marina Operators within the Port Authority's area.

Subsequent reviews with Stakeholders have been undertaken at required times, these including prior to each Plan re-approval. In each revision, stakeholder feedback details are included in the updated Plan.

The Plan, following each (re)approval, is published by the Port. The website <https://www.peelports.com/ports/great-yarmouth> is updated to show the latest edition.

This Plan 2019 was produced following consultation, initiated by e-mail to ships' Agents, berth operators and main port users. This communication was sent on the 7th of July 2019 (*See Appendix B*).

The consultation returns suggested no changes are required to the present provision of waste facilities outlined in the Plan. For further detail of the consultation including list of consultees and comments received. (*see Appendix B*)

Assessment of Waste Streams Requiring Reception Facilities

The Port Area

Great Yarmouth Port Authority (GYPA) is the Statutory Harbour Authority and the port is managed on its behalf by Great Yarmouth Port Company Ltd.

The port area comprises:

- a) **Outer Harbour** with over 1 kilometre of quays accommodating vessels up to 200 metres in length and up to 10 metres draught. This area is enclosed on the seaward side by low rock armour breakwaters with white coloured wave walling behind the berth areas.
- b) The **River** (or Haven) can accommodate vessels with Length of up to 120 metres. It extends 2.3 miles from the seaward entrance to the Yare upriver to a notional line drawn across the River Yare between OS Coordinates TG651870, TG307810 and TG651960, TG307860

Berths in the Port

A number of berths in the river are in full commercial use and others are providing only limited lay-by facilities for vessels. The berths are located along both banks of the river and are under various Ownership interests (See Appendix C)

Vessels Frequenting the Port

	2017	2018	2019*
General Cargo	165	146	160
Offshore industry	1922	1971	1828
Tankers	156	104	54
Repair	9	0	0
Barges	74	2	17
Tugs	209	27	32
Others	926	607	519
Total	3461	2857	2610

*To date

Ship-Related Activity Generating Waste

Offshore Oil & Gas and Offshore Windfarm Industries in the Southern North Sea

This activity includes regular calls by offshore supply, survey and crew transfer support vessels. Vessels connected with the offshore Oil & Gas and Windfarm industry customarily utilise 1+ berths during a single port call. Arrangements for waste reception and responsibility for waste collection may change during the currency of any such port visit.

Carriage of General Cargo including aggregates, cement, dry and liquid bulks, fertilisers, forest products, grain and minerals. Vessels carrying Bulk (fertiliser, aggregate or cereal) cargo utilise a single berth then sail directly on completion of load/discharge. Port turnaround usually is less than 72 hours. Waste streams are landed at a single Berth location.

Project Cargoes including transport for Modular construction offshore units. Vessels supporting this activity use the Outer Harbour (North + West Terminals) berths. Arrangements for reception of waste are agreed between the Vessel and the Port as required.

There are small ship repair and shipbuilding facilities on the river, including a dry-dock. Arrangements for waste disposal are arranged directly by the facility Owners.

Miscellaneous Vessels may call at the port for bunkering and storing purposes and/or to undertake periodic lay-up. Vessels requests for a lay-by berth infrequently exceed 1 month, waste reception facilities are provided on request.

Other Associated Waste Streams

Waste streams generated directly from offshore installations may transit the port. This waste stream exclusively is received and directly handled by offshore support bases located in the port. This waste does not cross berths operated by the GYPC. This Waste stream arrives in the port, transported on supply vessels, is documented as Manifest cargo, then handled using approved Waste contractors for appropriate disposal. All waste handled in this fashion is documented by the respective Terminal Operator, with a full audit trail.

Ship's own waste generated by the transporting supply vessel is handled separately from the above. This Plan does not cover Handling of waste from Offshore Installations but waste generated by supply vessels is included.

The Port Company does not store waste for disposal elsewhere.

Great Yarmouth Port Waste Management Plan

The Port comprises several berths owned/leased and/or operated by third parties (*see Appendix C*). Berths not operated by GYPC make their own arrangements for suitable handling of waste and may not customarily use port-provided bins.

Particularly, ASCO, Equinor/Dudgeon both produce a Waste Management Plan for their respective area(s). A copy of these Plans as provided is retained on file by the Port.

Vessels Visiting Great Yarmouth Trading Entirely within the European Union (EU). All waste landed can be treated as if it is produced inside the EU and does not require any special disposal methods. The MCA advised, with agreement from DEFRA, where a vessel arriving from outside the EU is the exception for the port rather than the rule, the Plan need only make provision for any food waste requiring disposal to be dealt with under the same 'direct contract' arrangements employed for oily waste, sewage or another special MARPOL waste stream.

All food refuse from these ships must be brought ashore in leak-proof bags and deposited in special bins brought to the ship by an authorised waste contractor. The Contractor will receive and dispose of the waste strictly according to the appropriate regulations. Other general domestic refuse may be deposited in the normal quay-side bins.

GYPC accepts responsibility for the garbage landed by vessels into the bins it provides but does not take ownership of waste at any point.

GYPC Duty of Care is discharged within the service it provides to those vessels using our managed berths and the associated waste reception facilities.

Waste Notification Form (WNF) (*see Appendix D*)

All ships visiting the port must submit a WNF with a CERS Workbook at least 24 hours before their arrival, except for vessels exempt by the MCA.

For vessels making a journey less than 24 hour from the Port, a CERS Workbook must be submitted at the earliest opportunity and at the very latest before leaving the previous Port. Information about the type of waste, dedicated storage and the amount to be retained on board, the port of which any remaining waste is to be delivered and the estimated quantity needs to be supplied in the Waste worksheet of the CERS Workbook

The waste worksheet, plus the other worksheets in the CERS Workbook needs to be completed and submitted when the vessel is inward bound and outward bound, as per MCA instructions, which can be found on their website. Ships should retain a copy of the CERS Workbook on board, for their own garbage records.

A copy of the CERS Workbook can be downloaded from the MCA website, see link:
<https://www.gov.uk/government/publications/the-cers-workbook>

Peel Ports Group Marine Planning and Great Yarmouth Marine Department monitor the CERS Workbooks received via the PortLinks Online Booking Portal or direct e-mail. Agents will be contacted if required, to request any outstanding CERS Workbook items from vessels due in the port over the next 24 hours. Agents are asked to provide details if there are any significant changes in the types or quantities in waste to be landed that may occur between the declaration being submitted and the ship arriving.

These notifications will be retained for a period of 2 years.

Where a vessel fails to notify the port as required above, GYPC will advise the MCA who then will determine and take appropriate action.

This section applies only to those berths over which GYPC has a direct responsibility.

Ships' Domestic Refuse

Waste bins, illustrated below, are provided at the locations indicated in the plan (*see Appendix E*). These Bins are provided for the disposal of ships' domestic refuse. These quayside waste bins must NOT be used for the disposal of hazardous waste (including oily waste, rags batteries, paint tins and filters).

The Bins are routinely checked by Port staff and emptied on a frequent basis. However, if they are observed full, then please contact the Telephone Number on the bin or skip and advise the Contractor.

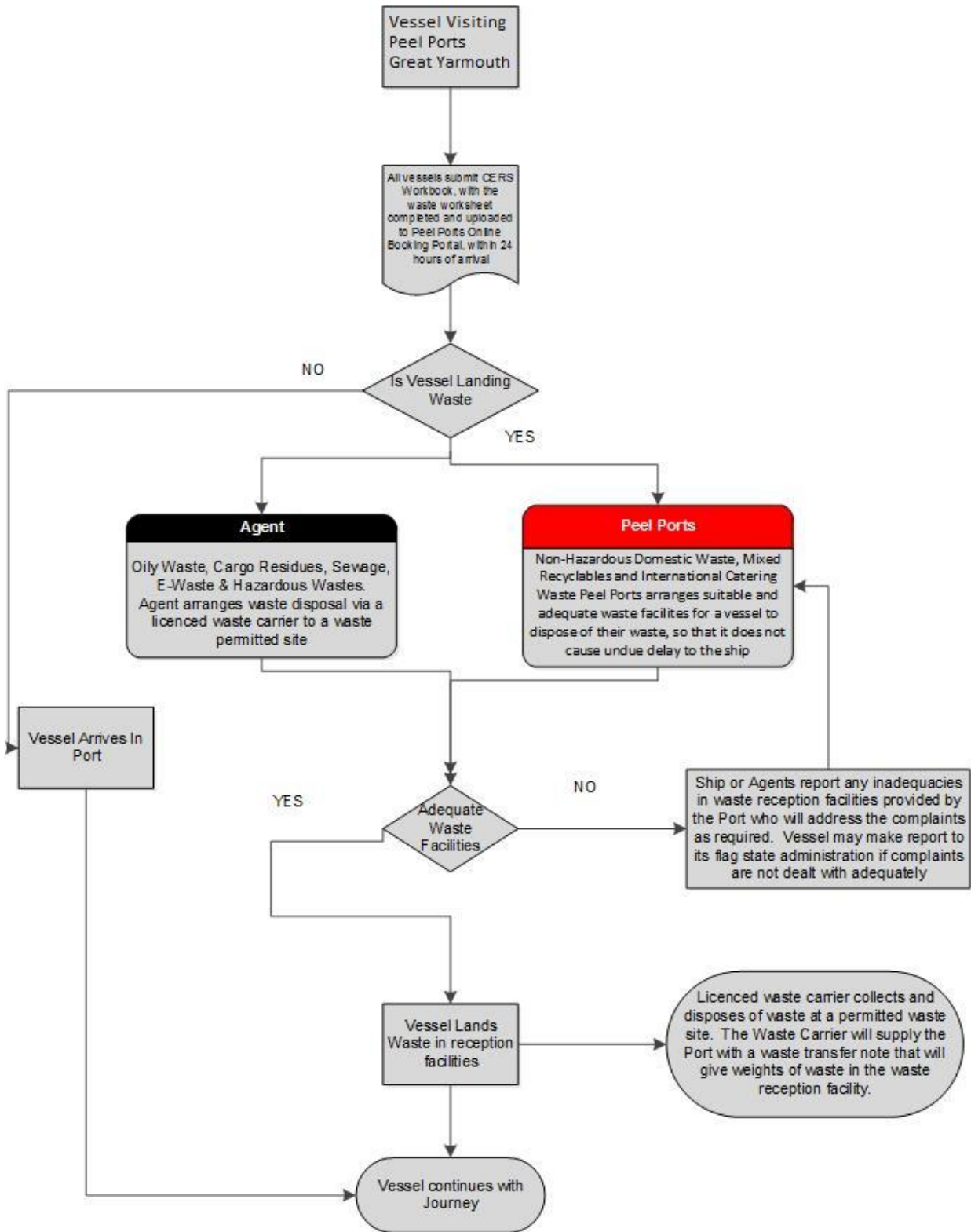


International Catering Waste (ICW).

Domestic waste that has either originated from non-European Union (EU) countries or is on a vessel which has called at a non-EU port in the last two years will be treated as ICW. This is a Category 1 Waste and must be separately declared. GYPC will assist the Master/ship Agent if required to ensure provision of a special container.

Large Quantities of Domestic Refuse (excess of 1,000 litres) and other waste including oily waste, cargo residues and cargo-associated waste require additional arrangements for reception are made. Contact must directly be made by the Vessel Master with his Ship's Agent who will assist to make necessary arrangements and ensure all waste is collected.

DRAFT



General Information

All vessels using the port will be automatically charged the Waste Reception Levy whether they use it or not.

Each Port has a different charge rate for Non-Hazardous Domestic Waste. Please note there is a separate charge for disposal of International Catering Waste.

All Waste Reception Levy charges can be seen on the Marine Webpages of Peel Ports via the yearly Schedule of Port Charges.

Waste Collection Facilities Available

Type of Waste	Collection Facility	Location	Special arrangements
Domestic	1,100 Litre Bins in River Port 3 yd covered bins in Outer Harbour	On GYPC Berths (See plan)	Skip emptied Weekly and/or as required.
Domestic Category 1 (Non-EU origin)	Clinical waste bags and dedicated skip.	As required	Cat 1 skip will be delivered to the ship as required. Collection will be arranged as required.
Deck Waste	Skip Available on Request	As required	Skip NOT to be used for scrap metal or Special Waste
Scrap	Skip Available on Request	Skip delivered to suitable area of berth close to vessel.	Vessels to arrange supply of skip via local Agent using approved contractor.
Special Waste	Approved Contractor	On demand	Arrange collection via Agent using approved contractor.
Liquid Waste	Road tanker	On demand	Arrange collection via Agent using approved contractor.

Certain berths under GYPC control are not utilised by Vessels on a regular basis. However, the service for reception of waste may be extended by GYPC to include these berths, when required.

Sewage Waste

Sewage may be discharged at sea in accordance with Regulation 11 of Annex IV of MARPOL 73/78. Ships do not need to notify information about sewage or land sewage wastes if it is the intention to make an authorised discharge at sea.

The provision for landing sewage is available at the Port through direct arrangement with the shipping agent. Sewage Waste is collected by road tanker and will require 24 hours' notice.

Residues from Exhaust Gas Cleaning Systems and Ozone Depleting Substances

Chemicals that are produced that can be categorised under MARPOL Annex VI are arranged by the shipping agent and disposed of to a permitted site, via a licensed waste carrier.

Hazardous Waste

Hazardous waste includes any waste substances that are considered a threat to people or the environment by their hazardous nature, including explosive, flammable, oxidising, irritant, toxic, harmful, carcinogenic or corrosive properties. Hazardous waste appears as an entry in the “List of Waste Regulations (England 2005, as amended). In addition to the oil waste and noxious liquids described above, ship generated hazardous waste can include the following*:

- Fluorescent Light Bulbs
- Tyres
- Paint and Paint Tins
- Adhesives and Resins
- Mercury Dry Cell Batteries
- Lead Batteries
- Drums containing Oily Residues
- Oil Contaminated Materials
- Acids
- Coolants
- Aerosols

**This list is not exhaustive*

Hazardous Waste **MUST** never be placed in any type of ships garbage waste container. The ship’s agent arranges for the appropriate reception facility and collection by a licensed waste carrier that can dispose of the waste according to the Hazardous Waste (England and Wales) Regulations 2005, as amended.

The Master of the vessel is responsible for completing any Consignment Note before any hazardous waste is removed from the ship by an authorized waste carrier.

E-Waste

All waste electrical and electronic equipment (WEEE) needs to be disposed of separately to Non-Hazardous domestic waste. The ships agent arranges collection and disposal via an appropriately licensed waste carrier and to a permitted waste site.

Special Waste

Special Waste includes the following: Oily Waste (e.g. filters), Oil/Lube Containers, Chemical Containers, Asbestos, Batteries, Fluorescent Tubes/Lamps, Halons/CFC, Clinical, Sanitary, Medicines, Pyrotechnics.

Liquid Waste

Liquid Waste includes the following: Dirty Ballast Water, Tank Washings, Oily Mixtures Containing Chemicals, Scale and Sludge, Oily Bilge Water, Sludge from Purification of Fuel Oil, Noxious Liquids and Sewage.

Control of Waste

The Ship's Master is responsible to separate waste and to ensure that only the approved means of disposal of waste materials is used.

All waste should be handled in a manner that will ensure there is no leakage or dispersal of the waste during transfer. All waste should be landed at the port where possible and the amount of waste carried onto another port should be kept to an absolute minimum.

Waste collected from skips provided by GYPC undergoes pre-treatment by the waste contractor, prior to being sent to landfill. This however does not include hazardous waste which should never be disposed of in domestic garbage skips.

Waste Management Companies

Waste Management contractors operating in the port must have the Regulator's approval. A list is attached (*See Appendix F*) These contractors must be able to produce evidence of a Waste Management Licence under Section 35 of the Environmental Protection Act 1990 or a registered waste carrier under the Controlled Waste (Registration of Carriers and Seizure of Vehicles) Regulations 1991, as amended.

No other contractor should be used for the collection and disposal of waste.

The services of these contractors can be arranged through the Ship's Agent or the Berth Operator, but the Berth Operator must be notified of these activities.

Waste Collection from GYPC Provided Facilities

Blue Bins and Skips

The Port has a Contract (*see Addendum 3*) with East Coast Waste (ECW) for the collection of ship generated galley/domestic waste. Collections from quayside are made once per week or more frequently, as required. The provided bins are inspected weekly by port staff. Waste being landed from Vessels should be placed in black bin bags and deposited in the 1,100 Litre skips provided.

Collection of waste other than domestic waste can be arranged by your Ship's Agent. There will be an additional charge for this service.

Masters using the Port's Waste Collection service should note:

- Service is provided for domestic garbage only
- Waste should be handled in black bin bags to prevent spillage on the quay area
- Directly call the Tel No printed on the side if the skip is full
- Contact Ship's Agent directly for collection of other waste

Port staff directly will notify ECW of any waste left on berth areas after departure of the ship, in order that appropriate collection and disposal can be arranged:

Blue Bins - Telephone East Coast Waste (01493-653600)

Special waste and/or uncontained discarded waste left after departure of the Vessel) – Tel Harbour Office (01493-335501). HO will determine and direct collection is arranged through the appropriate Agent.

Reporting Inadequate Waste Reception Facilities at the Port

MGN 563 states “under the Regulations, ports and terminals must provide adequate reception facilities to receive the types and quantities of waste from ships normally using the port or terminal”. Ports and terminals should also make available information on how to report alleged inadequacies of waste reception facilities.

The Master or Ship’s Agent should notify the Port (or Terminal as appropriate) providing details of any deficiency/lack of reception facilities. If the problem is not resolved, the Master should complete the attached Form (*see Appendix G*) and submit this either directly or through the ship Owner, Flag State or Agent, to the MCA at the following address:

PWR Inadequacies
Environmental Quality Branch
Maritime and Coastguard Agency
Spring Place
105 Commercial Road
Southampton
Hampshire
SO15 1EG

If the problem remains unresolved, the Master should contact the Vessel’s Flag State Authority and request appropriate action is pursued through IMO.

Non-Compliance by Ship

Where there is clear evidence that a ship has proceeded to sea without having complied with the requirement to notify the Harbour Authority of the quantities of waste to be landed or without delivering all ship-generated waste to a waste reception facility, GYPC will inform the Maritime and Coastguard Agency.

Estimates of Waste Expected

Estimates of the total amount of waste, anticipated to be received in the port, based on the number and type of vessel arrivals is assessed (*See Addendum 1*). These calculations are based on the MCA Project 365 ‘Quantifying Waste Generated by Ships and Platforms in the North Sea’ as amended

Amount of Landed Waste

For statistical compilation purposes and to assist periodic review of the waste management plan, agents (*See Appendix H*) are requested to advise GYPC of the amount of waste notified by vessels they represent. In addition, they are requested to quantify waste actually delivered over the same period and waste retained for delivery at another port/terminal. All the information made available is collated by GYPC and sent to MCA (on an annual basis).

International Maritime Organisation information return

Under MARPOL 73/78 there is a requirement to provide information to the IMO as to the cost, type and capacity of port waste reception facilities for oily wastes, noxious liquid substances, tank washings and slops. This will be done using the annexed form (*See Appendix I*). Once the form is completed it will be returned to the MCA Marine Office on an annual basis.

Presently, information is not available. Appendix I will be completed and submitted when final details are received.

Publication of The Plan

The Waste Management Plan (current Edition) will be published by means of an updated Notice to Mariners. In addition, information on the facilities and collection arrangements are included in the Port Environmental information leaflet (*see Addendum 2*) that is available on the GYPC website: www.peelports.com

Waste Charges

Port Charges for waste collection apply as per the current Schedule of Port Tariffs which can be found on the following link:-

<https://www.peelports.com/media/4184/great-yarmouth-schedule-of-charges-2019.pdf>

Plan Review

A formal review of these arrangements shall be undertaken triennially.

APPENDICES

Regulations

Summary of Legislation

The legal requirements for ports to plan for the provision of waste reception facilities are set out in flag state and international legislation. Key legislation relevant to port waste management is provided in the list below:

- The international Convention for the Prevention of pollution from ships 1973, and its 1978 protocol (MARPOL 73/78)
- Proposal for a Directive of the European Parliament and of the Council on port reception facilities for the delivery of waste from ships, repealing Directive 2000/59/EC and amending Directive 2009/16/EC and Directive 2010/65/EU
- EU Directives 2000/59/EC, 2002/84/EC, 2007/71/EC on Port Waste Reception facilities for ship generated waste.
- Merchant Shipping & Fishing Vessels (Port Waste Reception Facilities) Regulations 2003, amended (PWRF 2003).
- European Animal By-Products Regulations 1069/2009/EC and 142/2011/EU which are enforced under the Animal By-Products (Enforcement) (England) Regulations 2011.
- Control of Pollution (Amendment) Act 1989
- The Environmental Protection Act 1990
- Environmental Permitting (England and Wales) Regulations 2016
- The Hazardous Waste (England and Wales) Regulations 2005, as amended
- List Wastes (England) Regulations 2005,
- The Waste (England & Wales) Regulations 2011 amended which implement the revised EC Waste Framework Directive 2008/98/EC.
- Marine Strategy Regulations 2010

1.1. Merchant Shipping and Fishing Vessels (Port Waste Reception Facilities) Regulations 2003

Requires all harbour authorities and terminal operators to provide waste reception facilities, adequate to deal with waste of types covered by the Regulations and emanating from ships normally using the harbour or terminal. The Port must produce a Waste Management Plan, detailing particulars of the arrangements it has put in place to meet this requirement and to make submission to the Secretary of State for Transport for Plan approval. The harbour authority (or terminal operator where the operator has prepared a Plan) then is required to implement the Plan.

The Regulations also require:

- a. Vessels to notify the harbour or terminal in advance of arrival of the amount of waste to be discharged.
- b. Vessels to deliver waste to reception facilities provided in the harbour or terminal

- c. Harbour authorities and terminal operators to impose charges, adequate to cover the costs of waste reception facilities for ship-generated waste.

Regulations empower the Secretary of State to grant exemptions from some of the provisions contained in the legislation. Vessels which satisfy certain criteria – that they operate a ‘scheduled’, ‘frequent’ and ‘regular’ service between ports, according to the definitions contained in Marine Guidance Note 259 – will be exempted from the requirements for advance notification of waste, mandatory discharge of waste and payment of a charge to cover the provision of reception facilities.

The Merchant Shipping (Prevention of Pollution by Sewage and Garbage from Ships) Regulations 2008, as amended, apply to ships over 400 GT. Regulations prohibit the disposal of plastics anywhere at sea and control the disposal of other waste within defined distances from the land. Disposal of sewage is added to the requirements; discharge of sewage at sea is permitted in accordance with Regulation 11 of Annex IV of MARPOL.

1.2. MARPOL Regulations

The International Convention for the Prevention of Pollution from Ships 1973, and its 1978 Protocol (MARPOL 73/78) aims to regulate and minimise pollution from ships. MARPOL 73/78 covers the five main forms of ship generated waste in five specific annexes which are summarised below.

MARPOL Regulations relating to reception facilities

Annex	Category of Waste	Annex in force?	Reception facilities required?	Types of Waste for Reception
I	Oil	✓	✓	Covers all types of waste from the carriage of oil: as fuel, engine room slops, cargo (tank washings) or dirty ballast water.
II	Noxious liquid substances in bulk	✓	✓	Chemical waste derived from bulk chemical transportation, including residues and mixtures containing noxious substances.
III	Harmful substances carried by sea in packaged form	✓	✗	-
IV	Sewage from ships	✓	✓	Raw sewage – retained in holding tanks for disposal in port or outside 12nm Partially treated sewage – retained in holding tanks for disposal in port or outside 4 nm.
V	Garbage from ships	✓	✓	Garbage includes domestic (food and packaging) and operational (maintenance, cargo and miscellaneous) wastes.
VI	Air pollution from ships	✗	✗	-

Annexes I, II, IV and V provide specific requirements for the handling and discharge of ship generated waste.

MARPOL Regulations requiring the provision of reception facilities for ship generated waste are incorporated into UK legislation under the Prevention of Pollution (Reception Facilities) Order 1984 and the Merchant Shipping (Reception Facilities for Garbage) Regulations 1988. These regulations require harbour authorities and terminal operators to provide reception facilities for ships, which, in their opinion, are using the harbour or terminal for a primary purpose other than using the reception facilities. The provided facilities must be adequate (capacity and appropriate design) to meet the needs of ships using them and without causing undue delay.

1.3. The Environmental Protection Act 1990 – Duty of Care

The Environmental Protection Act 1990 imposes a Duty of Care on all persons in the waste management chain, to take all reasonable measures to ensure that waste is safely and legally disposed.

1.4. Regulation (EC) No 1069/2009 of The European Parliament and of the Council of 21 October 2009 Laying Down Health Rules As Regards Animal By-Products And Derived Products Not Intended For Human Consumption And Repealing Regulation (EC) No 1774/2002 (Animal By-Products Regulation)

International Catering Waste (ICW) is defined as catering waste that originates from a means of transport operating internationally (i.e. outside of the EU). ICW is considered high risk Category 1 Animal By-Product (ABP). ICW is subject to very strict handling and disposal controls, to prevent the introduction of exotic notifiable e.g. Foot and Mouth diseases into the UK. There is a risk disease is spread in event farmed or feral animals come into contact with ICW. The legislation establishes control measures, designed to minimise this risk.

Under Article 4 of the Control Regulation, as soon as operators generate ABPs or derived products, they must identify and ensure that the material is dealt in accordance with the Control Regulation.

All food normally prepared for consumption in a galley/kitchen or catering facility (including associated food stores) becomes catering waste when it is no longer intended for human consumption i.e. when it is disposed of into a waste bin or a plastic bag.

The Regulations differentiate between waste derived from food which originated within the European Union and that which originated from outside. It stipulates different methods and disposal routes for EU and non-EU food waste. If the two waste streams are mixed, then the whole amount of waste must be disposed of at the higher (non-EU) treatment level.

Catering waste from a means of transport operating exclusively within the EU can be handled in the same way as domestic catering waste.

Under Article 12 of the Control Regulation, Category 1 ABP can only be disposed of in the following ways in order of waste hierarchy:

- Used for the manufacture of derived products referred to in Articles 33, 34 and 36 of the Control Regulation and placed on the market in accordance with those articles. This would include Used Cooking Oil (ICW) intended for production of biodiesel in a plant approved under the ABP Regulations.
- Used as a fuel for combustion, with or without prior processing
- By co-incineration with energy recovery (as for incineration below)
- As waste by incineration:
 - Directly without prior processing
 - Following processing (methods 1-5) and permanent marking by use of Glyceryl Tri-Heptanoate (GTH).
- Disposal by pressure-sterilised means and deep burial in a licensed landfill site
- In the case of ICW, disposal by deep burial in a licensed landfill site. This is the only type of category 1 ABP, which can be disposed of in this way. No pre-treatment is required.

1.5. Hazardous Waste Regulations 2005

Waste is defined as being 'hazardous' if listed in the European Waste Catalogue 2002. It includes items such as batteries or fluorescent light tubes.

Hazardous waste must not be placed in the general garbage facilities. These are for the disposal of Annex V waste streams only. If hazardous waste requires to be landed, contact an approved waste contractor.

The Hazardous Waste Regulations 2005 require premises, which generate hazardous waste, to be registered with the Environment Agency. Ships are exempt from the need to register.



25th July 2019

To: Circulation - Port Agents

Dear Sir/Madam,

Port Waste Reception Facilities

Peel Ports Great Yarmouth, discharging its responsibility on behalf of the Statutory Harbour Authority, is undertaking a triennial review of its Port Waste Reception facilities. There is a requirement for us to ascertain from our customers the expected demand for waste to be landed at the port's Terminals/Berths. These comprise:

Outer Harbour and River Berths 1-33

Specifically, we now are seeking your input, based upon estimated vessel activity for the next period of 24 months, to inform:

Type(s) of waste; Quantity (cubic m); any particular waste requirements

Also, we value your feedback to highlight any issues regarding the waste facilities/services presently provided that may have arisen over the past 12 months. This will enable us properly to address any deficiencies and where possible take steps to remedy any ongoing issues you may have and/or to resolve any customer dissatisfaction.

It will greatly assist us to discharge our responsibilities to have your response before 31st July 2019 and thank you in advance for your co-operation.

Yours faithfully

A handwritten signature in blue ink that reads "Brian".

Brian Forrest
Senior Manager Marine Operations

Peel Ports Great Yarmouth
Vanguard House,
South Beach Parade
Great Yarmouth
NR30 3GY
Tel: +44 (0)1493 335 520
Email: gyharbouoffice@peelports.com
Website: www.peelports.com

APPENDIX B

CONSULTEE LIST

AGENT	ADDRESS	PHONE NUMBER	Comments
ASCO	Yarmouth Marine Base, South Denes Road, Great Yarmouth, NR30 3LX	01493 848058	None
Thos. E. Kettlewell & Son Ltd	Crowle House, 41 High Street, Hull, HU1 1RJ	01482 324191	None
Peterson	Bressay House, South Denes Road, Great Yarmouth, NR30 3PR	01224 586556	None
Clarkson Port Services	Europa House, 40 South Quay, Great Yarmouth, NR30 2RL	01493 856831	None
Cory Brothers Shipping	PD House, Cliff Quay, Ipswich, IP3 0BG	01473 217979	1
Seletar Shipping	Meridian House, Swanstons Road, Great Yarmouth, NR30 3PT	01493 330076	None
Gardline Ltd	Endeavour House, Admiralty Road, Great Yarmouth, NR30 3NG	01493 850723	None
Great Yarmouth Line Ltd	51 South Denes Road, Great Yarmouth, NR30 3PR	01493 857583	None
Seacore Boston Putford	Columbus Buildings, Waveney Road, Lowestoft, NR32 1BS	01502 573366	None
LV Shipping Ltd	Unit 11, Brinell Way, Harfrey's Industrial Estate, Great Yarmouth, NR31 0LU	01493 657755	None
GAC Shipping UK Ltd	Unit 5, Farthing Road Industrial Estate, Ipswich, IP1 5AP	08450 021170	1
Stema Shipping Ltd	Cory House, 21 Berth, Tilbury Docks, GB-Tilbury, Essex RM18 7JT	01375 857890	None
Denholm Barwill Ltd	96 Langer Road, Felixstowe, Suffolk, IP11 2EG	01394 696950	None

Berths in the Port**River Port Berth List**

BERTH	OPERATOR	ACTIVITY
1A – 1B	Halliburton	Offshore
1C – 1D	ASCO (leased from GYPC)	Offshore
2A	GYPC	Occasional layby
2B	GYPC	Liquid fertiliser
3	ASCo leased from GYPC	Offshore
4A – 5C	GYPC	Offshore, general, bulks
6A – 6B	GYPC	Offshore
7A – 8A	ASCO (leased from GYPC)	Offshore
8B – 9	Equinor (leased from GYPC)	Offshore, general
10	GYPC	Small craft
11	A&P/Brineflow	Liquid Fertiliser
12A – 12D	ASCO (leased from GYPC)	Offshore, fuels
13A – 14B	GYPC	Offshore, general
15	E.ON (leased from GYPC)	Windfarm support
16A – 16B	Gardline	Survey support
17A – 17B	George Prior Engineering	NON OPERATIONAL
18	EMR	Scrap metal
19	Aquamech Services	NON OPERATIONAL
20	Great Yarmouth Warehousing Co	NON OPERATIONAL
21a – 21h	GYPC	Layby and small craft
23b	Pasta Foods	Small craft
23c	A W Cushion Ltd	NON OPERATIONAL
24a – 24b	J & H Bunn Ltd	NON OPERATIONAL
25	GYPC	Layby
26	GYPC	Layby
27a – 27b	SeaTrax Ltd	Offshore fabrication
28	Atlantic Marine	Offshore
29a – 29b	Alicat	Repairs
30a – 30c	Ventureforth 2000 Ltd	NON OPERATIONAL
30d – 30e	Silverton Aggregates	Bulk and general
31a – 31e	GYPC	Offshore layby
32a – 32b	ASCo	Offshore and fuels
32c – 32d	CLS Offshore	Project
33	CLS Offshore	Project

Outer Harbour Berth List

BERTH NUMBER	OPERATOR	ACTIVITY
NT1	GYPC	General
NT2	SIEMENS	General
WT3	GYPC	General
WT4	GYPC	General
WT5	Stema Shipping (leased from GYPC)	Aggregate
ST6	GYPC	Non -Operational
ST7	GYPC	Non -Operational

Port Waste Notification Form

This form is to be completed unless the ship has been granted an exemption by the Maritime & Coastguard Agency

Ship Information

Name of Ship		IMO Number	
Call Sign		Flag State	
ETA - Date/Time		ETD – Date/Time	
Number of Crew		Berth No. / Terminal	
Last Port of Call		Next Port of Call	
Ship's Agent		Email address	
Last Port and date where waste discharged			
How much waste will you deliver to port reception facilities?			
ALL	<input type="checkbox"/>	Some	<input type="checkbox"/>
		None	<input type="checkbox"/>

Waste	Amount of waste to be delivered (m ³)	Maximum dedicated storage capacity (m ³)	Amount of waste retained on board (m ³)	Port where remaining waste will be delivered	Estimated amount of waste to be generated before next port of call (m ³)
Oil					
Sludge					
Bilge Water					
Other (specify)					
Garbage					
Food Waste					
Plastic					
Other (specify)					
Cargo Associated Waste					
Specify					
Cargo Residue					
Specify					

Notes

- 1 This information may be used by port State control and other inspection purposes.
- 2 Member states will determine which bodies receive this information.

Directive 2010/65/EU

I confirm that the above details are accurate and correct and; there is sufficient dedicated onboard capacity to store all waste generated between notification and the next port at which waste will be delivered.

Date.....

Name.....

Location of Ships' Refuse Waste Bins



Location of Ships' Refuse Waste Bins



Waste Management Contractors

Waste Management Firms	Asbestos	Clinical Waste	Consultancy	Domestic Refuse	Household waste	Incineration	Industrial/Commercial	Landfill	Liquid waste collection	Recycling site	Sewage / Sludge	Skips & Vehicle Hire	Special waste	Transfer Station	Tyre Collection	Treatment Plant	Waste Oil Recovery	Waste-to-energy facilities	Contact Number
Biffa Waste																			01493 603286
Enviroco																			01493 856722
Local Fast (MGaze & Co)																			01508 548543
Veolia UK																			01603 731940
Norfolk Environmental Waste Services (NORSE Waste Solutions)																			01493 742150
C & L Waste Oil Collection																			01493 442056
FCC Environmental																			01502 508777
East Coast Waste																			01493 653600
Abbey Environmental																			01493 850303
Fenkleen Environmental Services																			01366 377588
WT Waste																			01493 668118

REVISED CONSOLIDATED FORMAT FOR REPORTING ALLEGED INADEQUACIES OF PORT RECEPTION FACILITIES¹

The Master of a ship having encountered difficulties in discharging waste to reception facilities should forward the information below, together with any supporting documentation, to the Administration of the flag State and, if possible, to the competent Authorities in the port State. The flag State shall notify the IMO and the port State of the occurrence. The port State should consider the report and respond appropriately informing IMO and the reporting flag State of the outcome of its investigation.

1 SHIP'S PARTICULARS

1.1 Name of ship: _____

1.2 Owner or operator: _____

1.3 Distinctive number or letters: _____

1.4 IMO Number²: _____

1.5 Gross tonnage: _____

1.6 Port of registry: _____

1.7 Flag State³: _____

1.8 Type of:

- Oil tanker Chemical tanker Bulk carrier
- Other cargo ship Passenger ship Other (specify) _____

2 PORT PARTICULARS

2.1 Country: _____

2.2 Name of port or area: _____

2.3 Location/terminal name (e.g. berth/terminal/jetty) _____

2.4 Name of company operating the reception facility (if applicable) _____

2.5 Type of port operation:

- Unloading port Loading port Shipyard
- Other (specify) _____

2.6 Date of arrival: _____ (dd/mm/yyyy) –
(dd/mm/yyyy)

2.7 Date of occurrence : _____ (dd/mm/yyyy) –
(dd/mm/yyyy)

2.8 Date of departure: _____ (dd/mm/yyyy) –
(dd/mm/yyyy)

¹ This format was approved by the fifty-third session of the Marine Environment Protection Committee in July 2005.

3 In accordance with the IMO ship identification number scheme adopted by the Organization by Assembly resolution A.600(15).

4 The name of the State whose flag the ship is entitled to fly.

5 INADEQUACY OF FACILITIES

3.1 Type and amount of waste for which the port reception facility was found inadequate and nature of problems encountered.

Type of waste	Amount for discharge (m3)	Amount not accepted (m3)	Problems encountered Indicate the problems encountered by using one or more of the following code letters, as appropriate. A No facility available B Undue delay C Use of facility technically not possible D Inconvenient location E Vessel had to shift berth involving delay/cost F Unreasonable charges for use of facilities G Other (please specify in paragraph 3.2)
MARPOL Annex I related Type of oily waste			
Oily bilge water			
Oily residues (sludge)			
Oily tank washings (slops)			
Dirty ballast water			
Scale and sludge from tank cleaning			
Other (please specify)			
MARPOL Annex II related Category of NLS ⁶ residue/water mixture for discharge to facility from tank washings			
Category X substance			
Category Y substance			
Category Z substance			
MARPOL Annex IV related Sewage			
MARPOL Annex V related Type of garbage			
Plastic			
Floating dunnage, lining, or packing materials			
Ground paper products, rags, glass, metal, bottles, crockery, etc.			
Cargo residues, paper products, rags, glass, metal, bottles, crockery, etc.			
Food waste			
Incinerator, ash			
Other (please specify)			
MARPOL Annex VI related			
Ozone-depleting substances and equipment containing such substances			
Exhaust gascleaning residues			

6 Indicate, in paragraph 3.2, the proper shipping name of the NLS involved and whether the substance is designated as solidifying or high viscosity as per MARPOL Annex II regulation 1 paragraphs 15.1 and 17.1 respectively

3.2 Additional information with regard to the problems identified in the above table

3.3 Did you discuss these problems or report them to the port reception facility?

Yes

No

If Yes, with whom (please specify)

If Yes, what was the response of the port reception facility to your concerns?

3.4 Did you give prior notification (in accordance with relevant port requirements) about the vessel's requirements for reception facilities?

Yes

No

Not applicable

If Yes, did you receive confirmation on the availability of reception facilities on arrival?

Yes

No

7 ADDITIONAL REMARKS/COMMENTS

Master's signature
(dd/mm/yyyy)

Date – Data: __/__/____

YEAR	VESSELS
------	---------

2012	3461
2013	2857
2014	2610

YEAR	VESSELS
------	---------

2012	3461
2013	2857
2014	2610

YEAR	VESSELS
------	---------

2012	3461
2013	2857
2014	2610

ANNEX I - WASTE OILS								
DECLARED			ACTUALLY LANDED			RETAINED		
Waste Oils			Waste Oils			Waste Oils		
m ³			m ³			m ³		
Sludge	Bilge water	Other	Sludge	Bilge water	Other	Sludge	Bilge water	Other
1583.80	2417.36	713.87	527.97	439.64	291.49	1273.78	1455.66	608.32
1636.71	2178.97	616.69	558.57	569.26	155.52	1288.42	1634.30	497.93
2622.81	3216.33	911.43	688.30	470.14	159.74	2205.61	1684.00	834.22

ANNEX V - GARBAGE								
DECLARED			ACTUALLY LANDED			RETAINED		
Garbage			Garbage			Garbage		
m ³			m ³			m ³		
Food	Plastic	Other	Food	Plastic	Other	Food	Plastic	Other
201.68	820.40	1607.55	84.02	211.06	1400.33	98.40	295.01	537.85
333.57	831.80	1693.07	170.21	223.37	617.47	163.00	329.76	540.01
265.88	854.75	1875.54	145.24	580.62	1471.60	118.19	299.12	600.08

CARGO (Associated waste and residues)					
DECLARED		ACTUALLY LANDED		RETAINED	
Waste	Res.	Waste	Res.	Waste	Res.
m ³	m ³	m ³	m ³	m ³	m ³
8.53	0.50	8.53	0.50	345.70	0.00
170.25	0.20	85.84	6.00	507.00	0.20
65.53	214.60	63.33	78.20	242.80	136.20

REPORT OF COST, TYPE & CAPACITY OF PORT WASTE RECEPTION FACILITIES

NAME OF PORT:

ESTIMATE OF TOTAL NUMBER OF VESSELS CALLING AT PORT (PER YEAR):

	OIL						Noxious Liquid Substances	Sewage	Garbage
	Dirty Ballast Water	Tank Washings (Slops)	Oily Mixtures Containing Chemicals	Scale & Sludge from Tank Cleaning Operations	Oily Bilge Water	Sludge from Purification of Fuel Oil	Categories A, B or C		
Type & Size of Facility									
Method of Use (Where Applicable)	Road tanker	Road tanker	Road tanker	Road tanker	Road tanker	Road tanker	Road tanker	Road tanker	8yd skips 1100 ltrs wheelie bins
Is Notice required? (If Yes, give number of hours)	24 hours	24 hours	24 hours	24 hours	24 hours	24 hours	24 hours	24 hours	24 hours
Frequency of Emptying	On demand	On demand	On demand	On demand	On demand	On demand	On demand	On demand	On demand
Annual Capacity (in tonnes)	As required	As required	As required	As required	As required	As required	As required	As required	As required
Amount of Waste which should be received									
Amount of Waste actually received									73680 kgs
Amount of Waste stored by ships for reception in other ports									
Cost of Use									

ANNUAL QUANTITIES OF WASTE

Annual Waste Quantity (2012)

Type of Vessel	Number per year	Days at sea	Number of crew	Annual Quantities of Waste Expected				
				Garbage	Deck	Special	Scrap Metal	Black/Grey Water (Ltr)
General	165	2	11	7260	3630	0	0	726000
Tanker	156	2	10	6864	3432	0	0	686400
Tug	209	2	4	836	418	0	209000	836000
Supply	898	2	10	17960	8980	4490	22450	3592000
Survey/Stby/Support	1024	30	17	261120	783360	40960	40960	156672000
Others	1009	1	3	2018	2018	0	0	1009000
TOTALS	3461	39	55	296058	801838	45450	272410	163521400
				Kg	Kg	Kg	Kg	Ltr

Annual Waste Quantity (2013)

Type of Vessel	Number per year	Days at sea	Number of crew	Annual Quantities of Waste Expected				
				Garbage	Deck	Special	Scrap Metal	Black/Grey Water (Ltr)
General	146	2	11	6424	3212	0	0	642400
Tanker	104	2	10	4576	2288	0	0	457600
Tug	27	2	4	108	54	0	27000	108000
Supply	1024	2	10	20480	10240	5120	25600	4096000
Survey/S'by/Support	947	30	17	241485	724455	37880	37880	144891000
Others	609	1	3	1218	1218	0	0	609000
TOTALS	2857	39	55	274291	741467	43000	90480	150804000
				Kg	Kg	Kg	Kg	Ltr

Annual Waste Quantity (2014)

Type of Vessel	Number per year	Days at sea	Number of crew	Annual Quantities of Waste Expected.				
				Garbage	Deck	Special	Scrap Metal	Black/Grey Water (Ltr)
General	160	2	11	7040	3520	0	0	704000
Tanker	54	2	10	2376	1188	0	0	237600
Tug	32	2	4	128	64	0	32000	128000
Supply	875	2	10	17500	8750	4375	21875	3500000
Survey/S'by/Support	953	30	17	243015	729045	38120	38120	145809000
Others	536	1	3	1072	1072	0	0	536000
TOTALS	2610	39	55	271131	743639	42495	91995	150914600
				Kg	Kg	Kg	Kg	Ltr

Great Yarmouth Port Company Ltd

Environmental Information

Contact Information

Harbour Office	01493 335501
Port Marine Services (PMS) (24 Hours)	0151 949 6648
Yarmouth Radio	VHF Ch 12

(VHF and telephone conversations with Port Marine Services are recorded)

E-Mail and Internet

Marine Services - GYmarineservices@peelports.com
Harbour Office - GYharbouoffice@peelports.com

Mail

Vanguard House, South Beach Parade,
Great Yarmouth, NR30 3GY

Environmental Policy

Great Yarmouth Port Company operates an Environmental Policy under ISO 14001, designed to minimise, as far as reasonably practicable, any detrimental impact on the environment. The following information is intended as a guide and overview on environmental matters for Vessel Masters and Ships' Agents.

Port Waste Management

On Port Company operated berths, waste bins are available for the disposal of ships' domestic (galley) refuse at the locations indicated on the plan attached. The quayside waste bins must NOT be used for the disposal of oily waste (including rags batteries, paint tins and filters) or other special wastes.

Domestic waste that has either originated from non-European Union (EU) countries or is on a vessel which has called at a non-EU port in the last two years will be treated as International Catering Waste (ICW) which is a Category 1 Waste. This waste must be separately declared and the Port Company will provide a special container. Large quantities of domestic refuse (in excess of 1000 litres) and other wastes including oily waste, cargo residues and cargo-associated waste must be collected separately and this should be arranged through the Ship's Agent.

All ships (except those specifically exempted) are required to notify their Agents, prior to arrival, of the quantities of waste to be landed at the Port. This should be done using the form available in MGN563 and also forwarded to the Port Company at least 24 hours prior to arrival. All waste must be declared and landed unless the declaration includes estimates of retained waste and there is sufficient capacity on board for this. Where the Master of a ship considers the waste reception facilities to be inadequate, then the Master or Agent should advise the terminal or Port immediately. If the matter remains unresolved the Master should contact the MCA.

Berth operators and private berth owners operate waste reception facilities provided under their own Waste Management Plans and they should be contacted directly.



PEEL PORTS GROUP LIMITED

Group Marine Environmental Policy

Peel Ports Group (PPG) recognises that ports play an important part in the economic, environmental and social life of surrounding communities.

The combination of these three elements allows the Group's Statutory Harbour Authorities to exercise responsibility by promoting sustainable developments for the benefit of the business and of the people linked with its ports.

Each port is committed to develop and implement management and control methods which prevent, or minimise environmental damage. These methods will be regularly reviewed in order to ensure that the ports continuously improve their environmental performance.

PPG recognises the value of communicating these objectives to staff, tenants and other stakeholders linked to its ports and is committed to a programme of regular discussions about its approach to securing a high standard of environmental management.

This Policy will be reviewed again within the next 3 years.

Signed:  Date: 1 March 2018
Andrew Hemphill
Port Director, Peel Ports Clydeport and Ardrossan

Signed:  Date: 1 March 2018
Richard Goffin
Port Director, Peel Ports Great Yarmouth and Medway

Signed:  Date: 1 March 2018
Paul Kavanagh
Port Director, Peel Ports Liverpool and Manchester

Signed:  Date: 1 March 2018
David Huck
Duty Holder, Heysham

ADDENDUM 3

DATED _____ 2019

GREAT YARMOUTH PORT COMPANY LTD

and

EAST COAST WASTE LTD

**AGREEMENT FOR THE PURCHASE AND SUPPLY
OF GOODS AND/OR SERVICES
WASTE MANAGEMENT SERVICES**

Commercial Waste Agreement

Certificate of Registration under the Waste (England and Wales) Regulations 2011

Regulation authority

Name	 Environment Agency
Address	National Customer Service Centre 99 Parkway Avenue Sheffield S9 4WF
Telephone number	03708 506506

The Environment Agency certify that the following information is entered in the register which they maintain under regulation 28 of the Waste (England and Wales) Regulations 2011.

Carriers details

Name of registered carrier	EAST COAST WASTE LTD
Registered as	an upper tier waste carrier, broker and dealer
Registration number	CBDU92978
Address of place of business	EAST COAST WASTE HARFREYS ROAD GREAT YARMOUTH NR31 0LS
Telephone number	01493 653600
Date of registration	Friday 15th February 2019
Expiry date of registration (unless revoked)	Sunday 20th March 2022

Making changes to your registration

Your registration will last 3 years and will need to be renewed after this period. If any of your details change, you must notify us within 28 days of the change.