

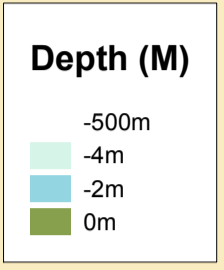


MERSEY DOCKS AND HARBOUR COMPANY LTD
 Gary Doyle
 Group Harbour Master

LPD010_1_2021_001
Crosby Marine Lake

DEPTHS
 Depths are in metres and are reduced to Chart Datum, which is defined as the maintained water depth in the lake. Observed water depth was 0.6m below chart datum, which was derived by measuring from the water line to the high water mark.

HEIGHTS
 Heights are in metres. Underlined figures show heights above Chart Datum.

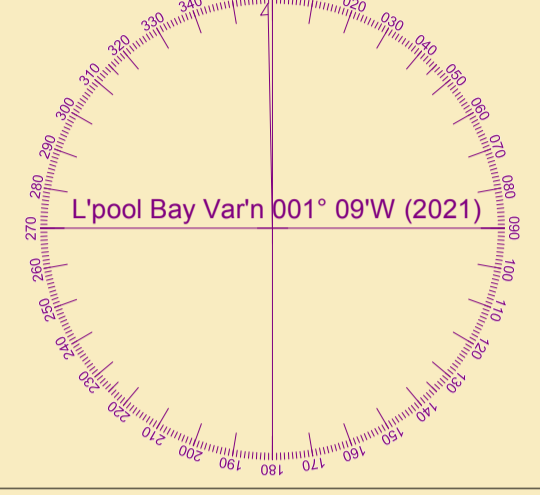


POSITIONS
 Positions are referred to OSGB36 National Grid Datum.

UKHO & NTMS
 When using this chart please refer to UKHO Admiralty Publications and also local Notice to Mariners and Navigational Warnings.

TOPOGRAPHY
 The shore features on this chart are based largely on Ordnance Survey digital mapping data with permission of HMSO. © Crown Copyright 2021. Peel Licence Number 100018033.

FLATS & SANDBANKS
CAUTION OWING TO FREQUENT CHANGES IN DEPTHS AND POSITIONS OF FLATS AND SANDBANKS THIS CHART SHOULD BE USED WITH CAUTION.



Vessel : Fitzroy
 Surveyed by : Peel Ports
 Processed by : NM
 Checked by : NM
 Surveyed : 3rd March 2021
 Issued : 9th March 2021

SCALE 1:1250 at A1

