

**SANDON DOCK RIVER ENTRANCE (DISUSED)**

**Please note:  
Wellington Dock is no longer a working dock  
and is now filled in.**

**Please note:  
Bramley Moore Dock is no longer a working dock  
and is now filled in.**

**NO ACCESS THROUGH PASSAGE**



**MERSEY DOCKS AND HARBOUR COMPANY LTD**

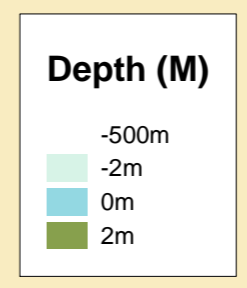
Gary Doyle  
Group Harbour Master

Liverpool Docks

LPD007\_1\_2022\_003  
Sandon Half Tide Dock

**DEPTHS**  
Depths are in metres and are reduced to chart datum being 4.93m below Ordnance Datum (Newlyn), which is approximately the level of Lowest Astronomical Tide.

**HEIGHTS**  
Heights are in metres. Underlined figures show heights above Chart Datum.

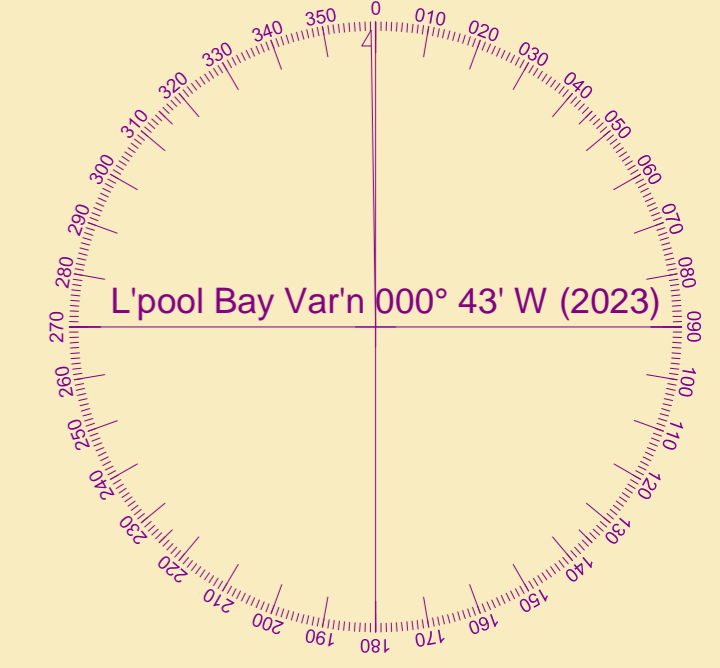


**POSITIONS**  
Positions are referred to OSGB36 National Grid Datum.

**UKHO & NTMS**  
When using this chart please refer to UKHO Admiralty Publications and also local Notice to Mariners and Navigational Warnings.

**TOPOGRAPHY**  
The shore features on this chart are based largely on Ordnance Survey digital mapping data with permission of HMSO. © Crown Copyright 2023. Peel Licence Number 100018033.

**FLATS & SANDBANKS**  
**CAUTION OWING TO FREQUENT CHANGES IN DEPTHS AND POSITIONS OF FLATS AND SANDBANKS THIS CHART SHOULD BE USED WITH CAUTION.**

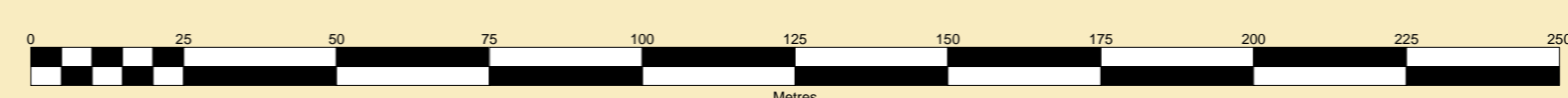


Milhouse Rocks

SALISBURY DOCK

Victoria Tower  
Salisbury Pier Head

SCALE 1:1250 at A1



Surveyed by:	FJT
Processed by:	RK
Checked by:	FJT
Surveyed:	31st March 2023
Issued:	3rd April 2023
Vessel:	Royal Charter