



MERSEY DOCKS AND HARBOUR COMPANY LTD

Gary Doyle
Group Harbour Master

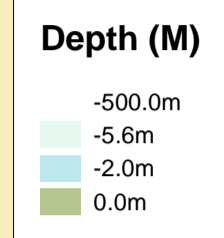
River Mersey

LPR001_2_2023_007 Gladstone River Entrance

Vessel: Royal Charter
Surveyed by: RK/EM
Processed by: RK
Checked by: RK
Surveyed: 18th August 2023
Issued: 21st August 2023
Lock Surveyed: 18th August 2023

DEPTHS
Depths are in metres and are reduced to chart datum being 4.93m below Ordnance Datum (Newlyn), which is approximately the level of Lowest Astronomical Tide.

HEIGHTS
Heights are in metres. Underlined figures show heights above Chart Datum.

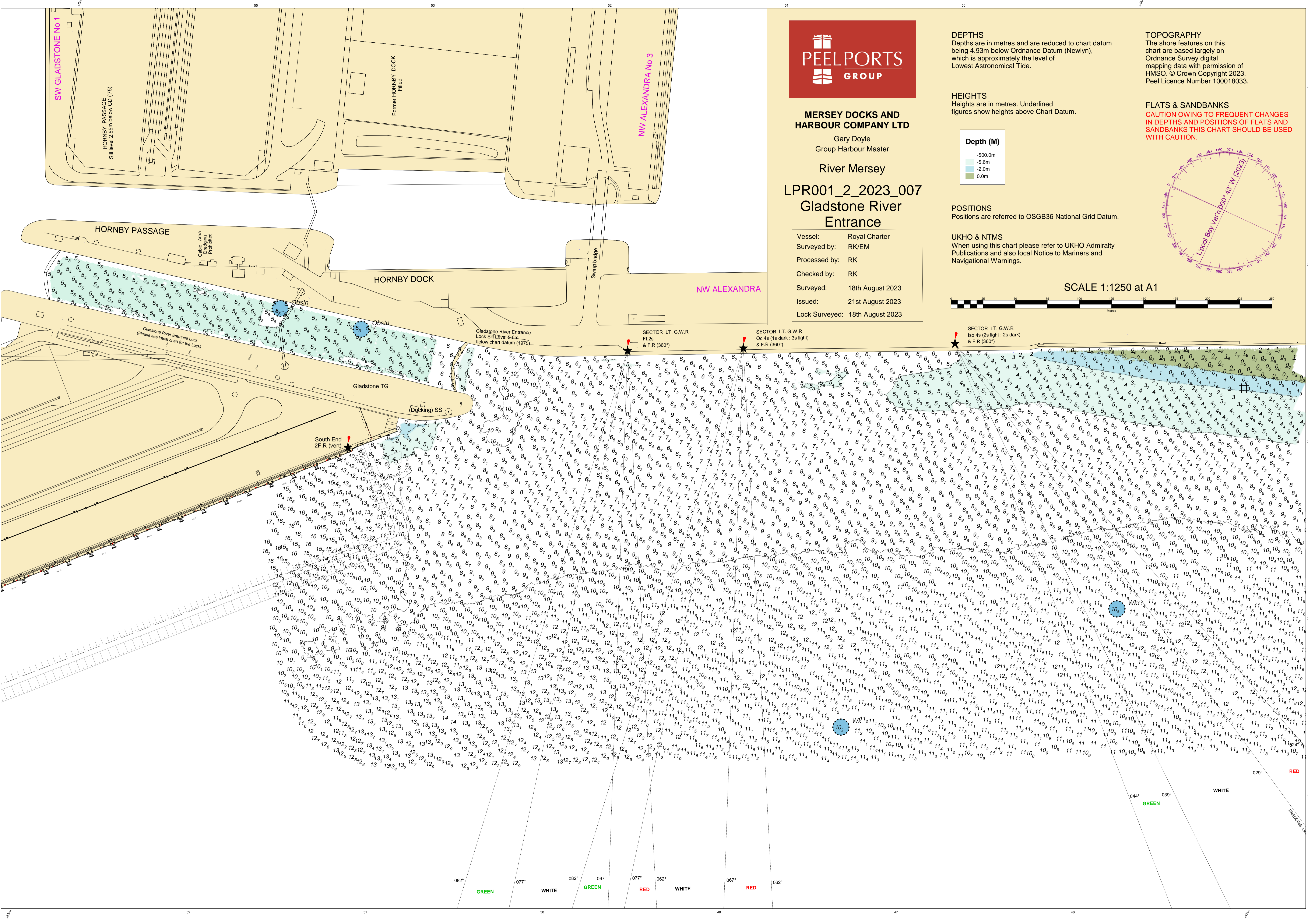
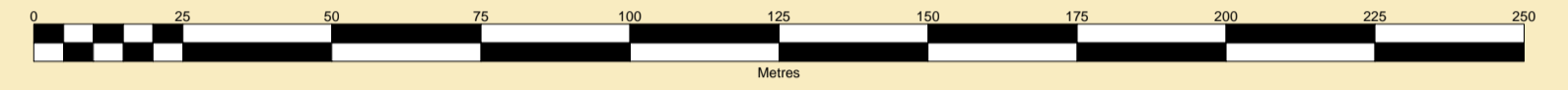
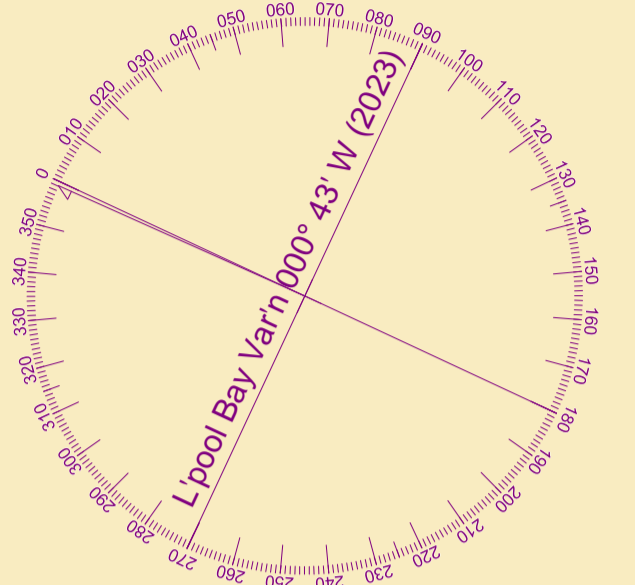


POSITIONS
Positions are referred to OSGB36 National Grid Datum.

UKHO & NTMS
When using this chart please refer to UKHO Admiralty Publications and also local Notice to Mariners and Navigational Warnings.

TOPOGRAPHY
The shore features on this chart are based largely on Ordnance Survey digital mapping data with permission of HMSO. © Crown Copyright 2023. Peel Licence Number 100018033.

FLATS & SANDBANKS
CAUTION OWING TO FREQUENT CHANGES IN DEPTHS AND POSITIONS OF FLATS AND SANDBANKS THIS CHART SHOULD BE USED WITH CAUTION.



55 53 52 51 50 49 48 47 46

25 23 21 20 19 18 17 16 15 14 13 12 11 10 9 8 7 6 5 4 3 2 1

082° GREEN 077° WHITE 067° GREEN 062° RED 057° WHITE 052° RED 047° WHITE 042° RED

044° GREEN 039° WHITE 029° RED