



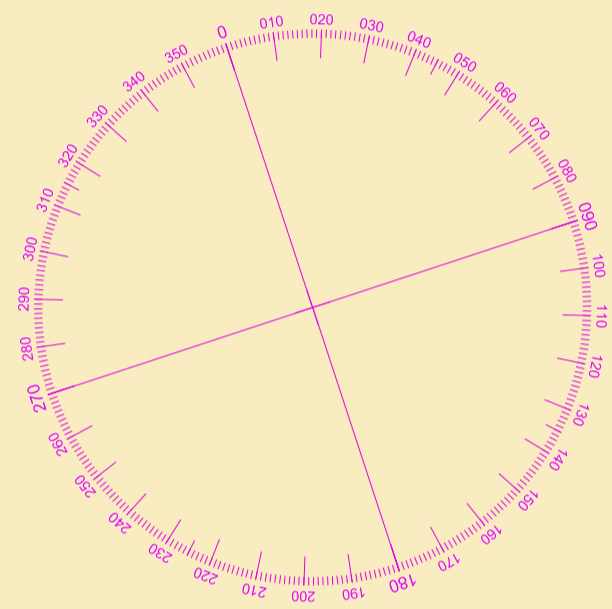
CLYDEPORT OPERATIONS LIMITED

GARY DOYLE
Group Harbour Master

River Clyde

**CPR001-1-2023-001
TIDAL WEIR TO
KINGSTON BRIDGE**

SCALE 1:1500 at A1



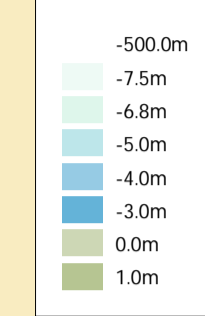
DEPTHS

Depths are in metres and are reduced to chart datum being 2.50m below Ordnance Datum (Newlyn), which is approximately the level of Lowest Astronomical Tide.

HEIGHTS

Heights are in metres. Underlined figures show heights above Chart Datum.

DEPTH COLOUR TABLE



POSITIONS

Positions are referred to OSGB36 National Grid Datum.

AUTHORISED CHANNEL

The pecked lines indicate the limits of the authorised channel.

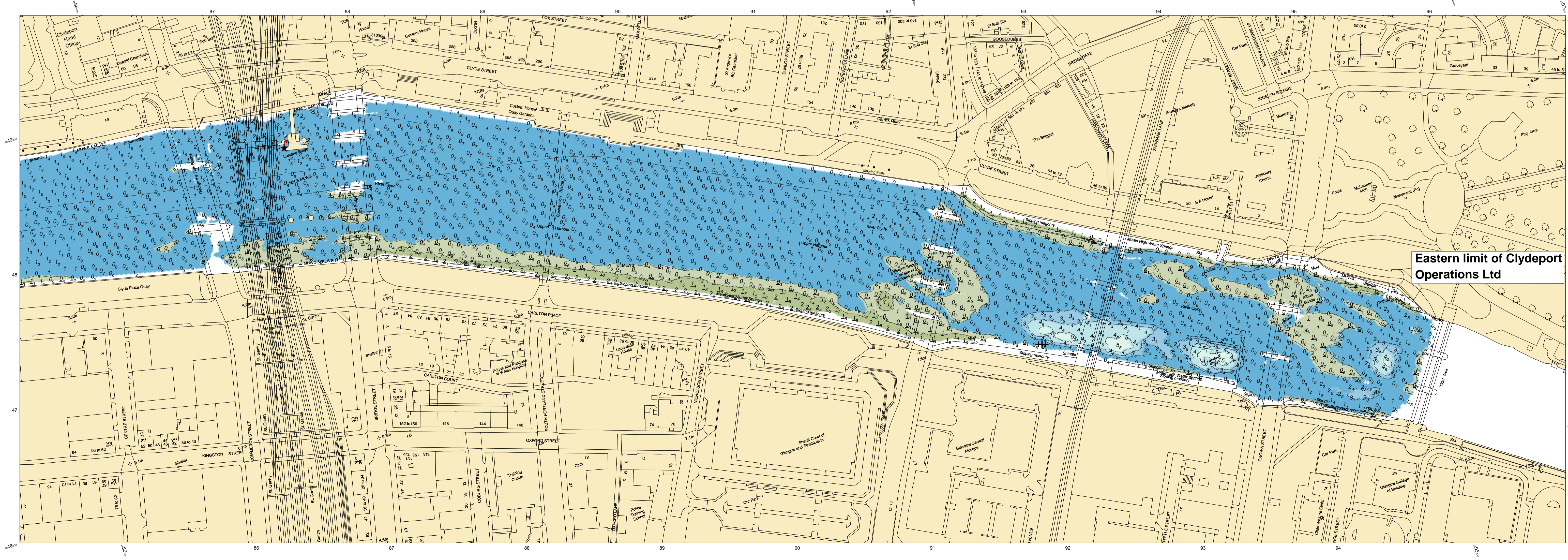
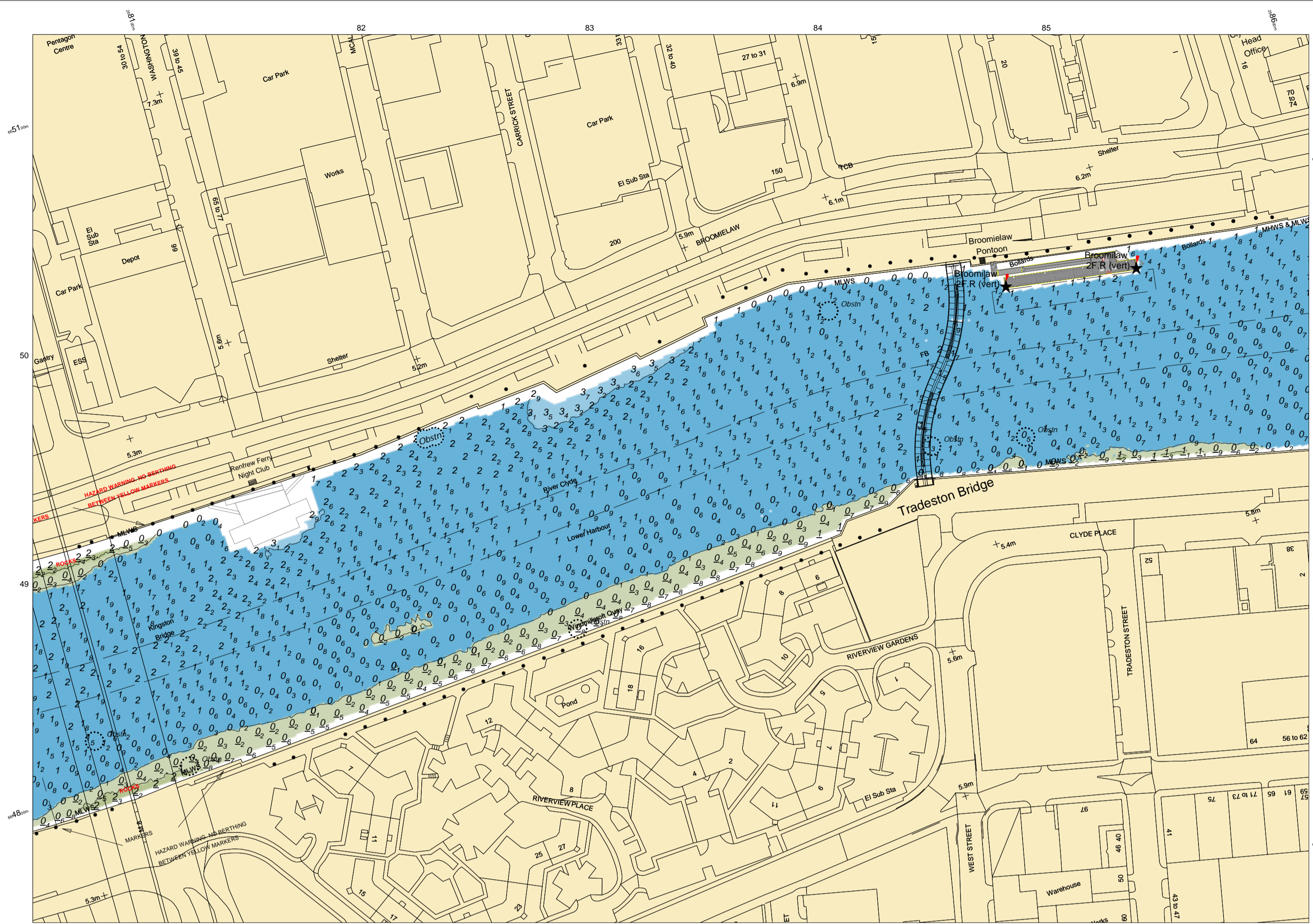
TOPOGRAPHY

The shore features on this chart are based largely on Ordnance Survey digital mapping data with permission of HMSO. © Crown Copyright 2023. Peel Licence Number 100018033.

BRIDGE OVERHEAD CLEARANCE HEIGHTS

Bridge	Height Above MHWS	MHWS	Height Chart Datum
ALBERT BRIDGE C/L of Centre Span Arch	4.85m	4.70m	9.55m
ST. ENOCH RAILWAY BRIDGE C/L of Centre Span Arch	7.80m	4.70m	12.50m
VICTORIA BRIDGE C/L of Centre Span Arch	5.54m	4.70m	10.24m
SUSPENSION BRIDGE North Side	4.52m	4.70m	9.22m
GLASGOW BRIDGE C/L of Centre Span Arch	5.41m	4.70m	10.11m
CENTRAL STATION BRIDGE C/L of Centre Span Arch	6.20m	4.70m	10.90m
GEORGE V BRIDGE C/L of Centre Span Arch	5.51m	4.70m	10.21m
TRADESTON BRIDGE Day Mark	5.40m	4.70m	10.10m
KINGSTON C/C of Arch	19.95m	4.67m	24.62m

Surveyed by: CSL
Processed by: WLH
Checked by: WLH
Surveyed: 10th February 2023
Issued: 6th March 2023



Eastern limit of Clydeport Operations Ltd