

# CT Upton

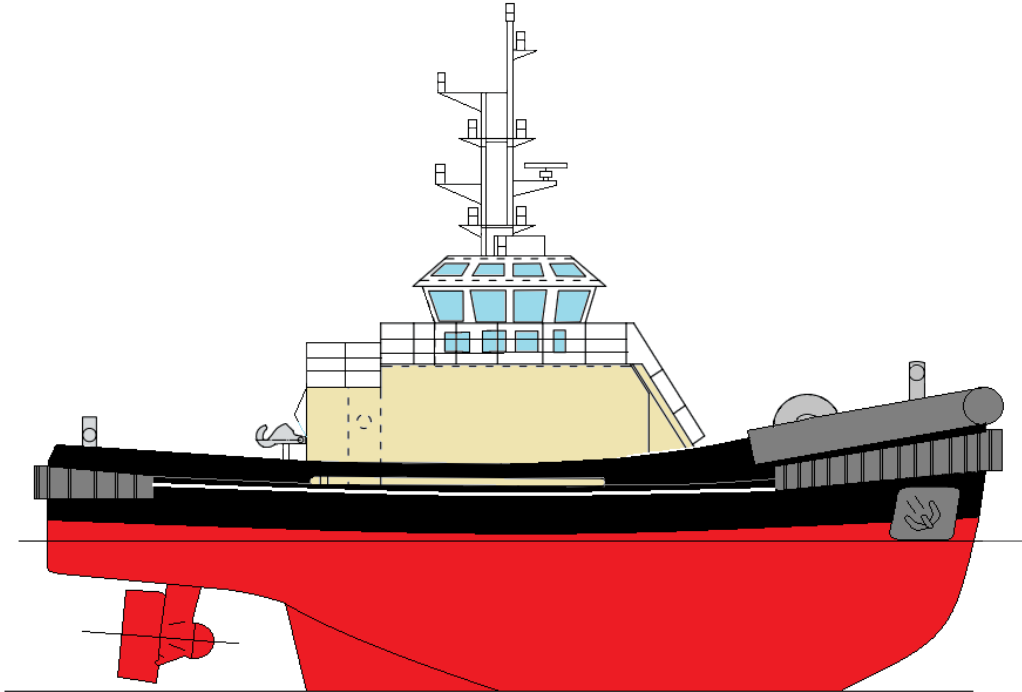
Harbour Tug



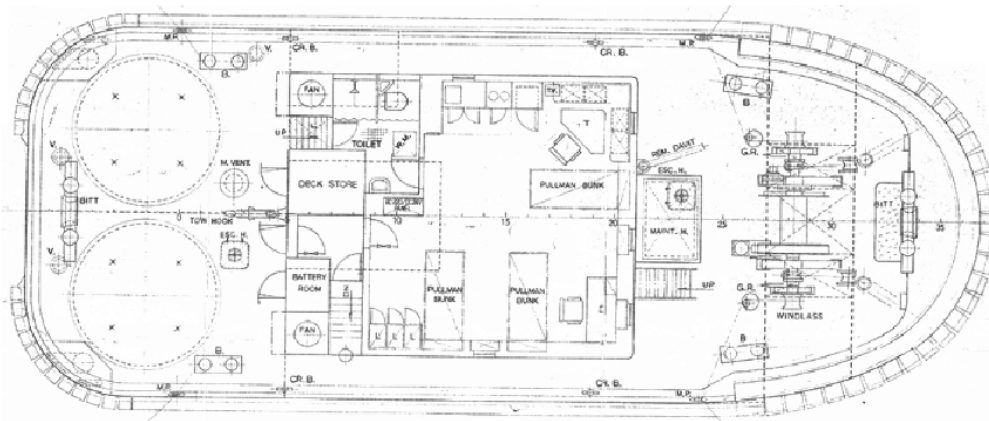
<b>Type of Vessel:</b>	Harbour Tug
<b>Built:</b>	Imamura Shipbuilding 1987
<b>Classification:</b>	Lloyds 100A1 Tug, MCA Workboat
<b>Length:</b>	22.60 m
<b>Beam:</b>	8.50 m
<b>Draft:</b>	3.50 m
<b>gt:</b>	131
<b>Free Running Speed:</b>	11.8 knots
<b>Bollard Pull:</b>	35 tonnes
<b>Main Engines:</b>	2 x Niigata 6L25CXE
<b>Total Power:</b>	2,600 bhp @ 720 RPM
<b>Propulsion:</b>	2 x Niigata ZP-2A Z-peller Azimuth Stern Drive Units with slipping clutches
<b>Generator Sets:</b>	2x 64 kw 380V, 50 hz alternators driven by Yanmar 6CHL-HTN diesel engines
<b>Electrical System:</b>	24v DC and 220/415V connections
<b>Fuel Oil:</b>	20 m3
<b>Fresh Water:</b>	35 m3
<b>Towing Winch:</b>	Electro-hydraulic single drum with double warping heads and double gypsies 60t BL
<b>Towing Hook:</b>	40t SWL
<b>Accommodation:</b>	4 Berths. Air Conditioned. Accommodation space is arranged in the deckhouse on the Main Deck level with toilet, shower and laundry facilities
<b>Navigation Equipment:</b>	2 x Sailor VHF, Radar: Furuno FR8030D, 12" x 48 miles, Echo Sounder: JRC Colour Echo sounder model, JFV 100M2, Fluxgate Compass, MD53 with dial repeater, Sestrel Minor overhead compass, AIS

# CT Upton

Harbour Tug



## MAIN DECK



## BELOW DECK

