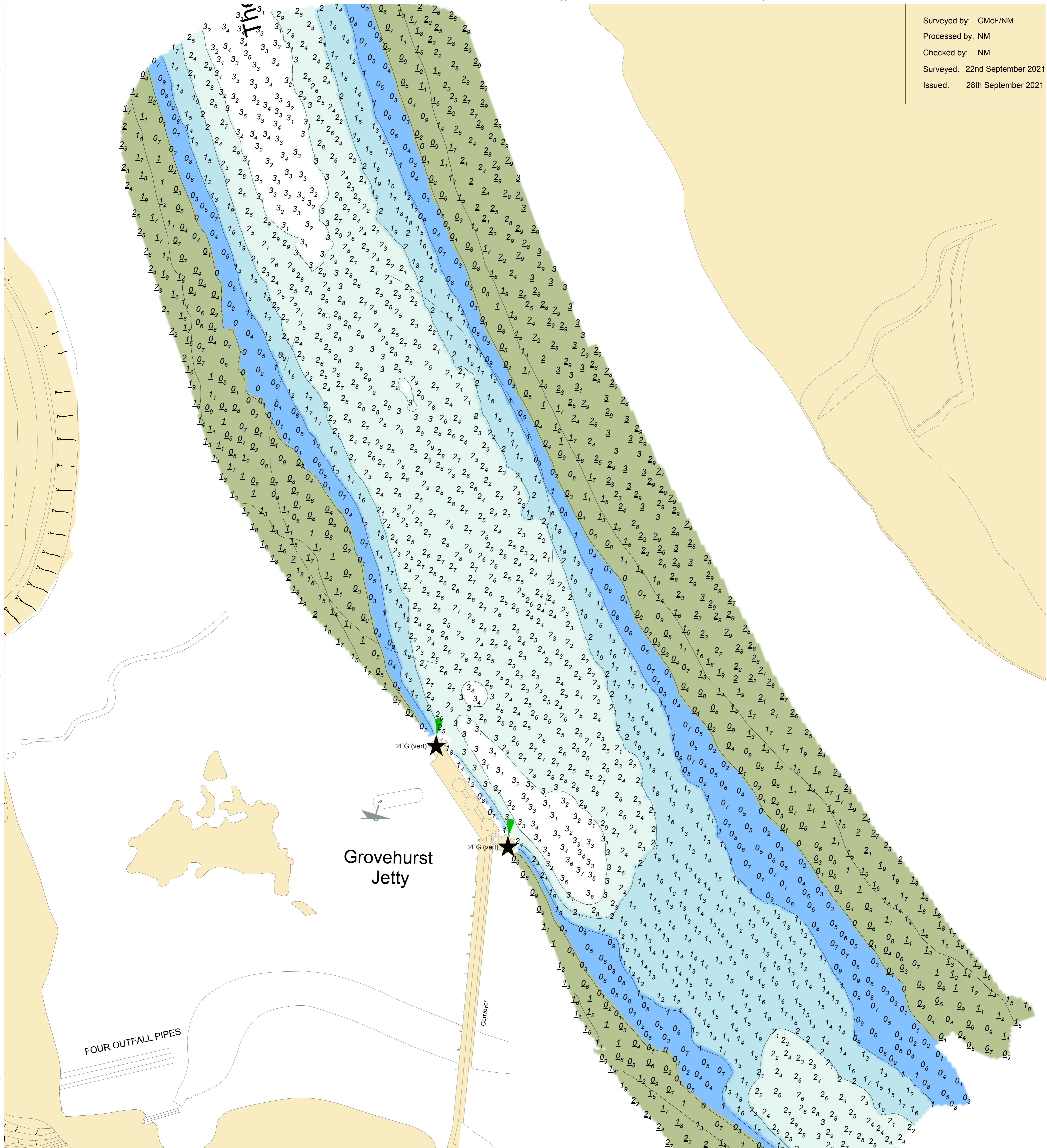


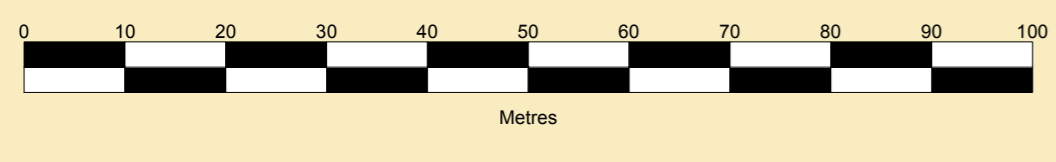
Surveyed by: CMcF/NM  
 Processed by: NM  
 Checked by: NM  
 Surveyed: 22nd September 2021  
 Issued: 28th September 2021



**PORT OF SHEERNESS LIMITED**  
 Gary Doyle  
 Group Harbour Master

The Swale  
**1594\_21\_001**  
**CLAY REACH**  
**GROVEHURST JETTY**  
**AND TURNING CIRCLE**

SCALE 1:750 at A1



**DEPTHS**  
 Depths are in metres and are reduced to chart datum being 2.90m below Ordnance Datum (Newlyn), which is approximately the level of Lowest Astronomical Tide.

**HEIGHTS**  
 Heights are in metres. Underlined figures show heights above Chart Datum.

**DEPTH COLOUR TABLE**

|             |            |
|-------------|------------|
| Light Blue  | (-1.4m,0m) |
| Blue        | (0m,1m)    |
| Light Green | (1m,2m)    |
| Green       | (2m,4m)    |
| White       | (>=4m)     |

**POSITIONS**  
 Positions are referred to OSGB36 National Grid Datum.

**TURNING CIRCLE**  
 The pecked lines indicate the 'Grovehurst Jetty' turning circle area.

**TOPOGRAPHY**  
 The shore features on this chart are based largely on Ordnance Survey digital mapping data with permission of HMSO. © Crown Copyright 2021. Peel Licence Number 100018033.

**NOTES**  
 While every care has been taken in the preparation of the information relating to the soundings shown on this chart, **PEEL PORTS MEDWAY make no warranty as to the accuracy and will not accept any responsibility whatsoever arising from errors and omissions or for any consequence arising therefrom.**

