

PORT OF SHEERNESS LIMITED
 GARY DOYLE
 Group Harbour Master

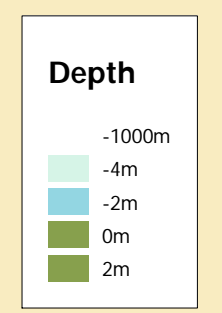
The Swale
1026B-1-20
THE SWALE
SHEERNESS HARBOUR TO
CLAY REACH

SCALE 1:2500 at A0

DEPTHS
 Depths are in metres and are reduced to chart datum being 2.80m below Ordnance Datum (Newlyn), which is approximately the level of Lowest Astronomical Tide.

HEIGHTS
 Heights are in metres. Underlined figures show heights above Chart Datum.

DEPTH COLOUR TABLE



POSITIONS
 Positions are referred to OSG536 National Grid Datum.

Surveyed by: CSL
 Processed by: NM
 Checked by: NM
 Surveyed: 21st July 2020
 Issued: 24th August 2020

TOPOGRAPHY
 The shore features on this chart are based largely on Ordnance Survey digital mapping data with permission of HMSO. © Crown Copyright 2020. Peel Licence Number 100018033.

NOTES
 While every care has been taken in the preparation of the information relating to the soundings shown on this chart, PEEL PORTS MEDWAY make no warranty as to the accuracy and will not accept any responsibility whatsoever arising from errors and omissions or for any consequence arising therefrom.

