



**MERSEY DOCKS AND HARBOUR COMPANY LTD**  
 Gary Doyle  
 Group Harbour Master  
 Liverpool Docks  
 LPR008\_1B\_2021\_001  
 Alfred Dock

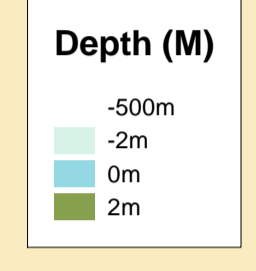
**DEPTHS**  
 Depths are in metres and are reduced to chart datum being 4.93m below Ordnance Datum (Newlyn), which is approximately the level of Lowest Astronomical Tide.

**HEIGHTS**  
 Heights are in metres. Underlined figures show heights above Chart Datum.

**POSITIONS**  
 Positions are referred to OSGB36 National Grid Datum.

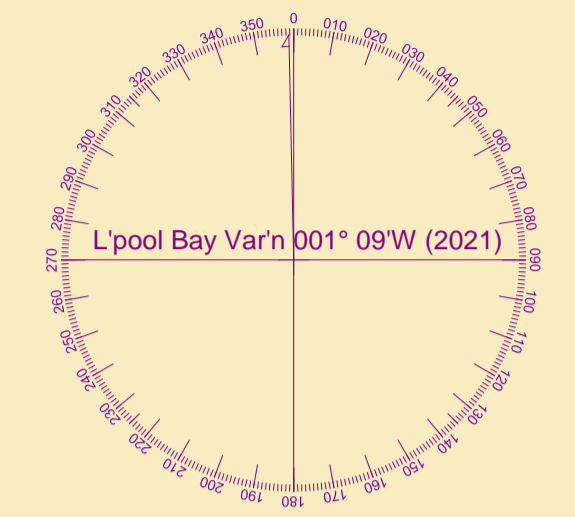
**UKHO & NTMS**  
 When using this chart please refer to UKHO Admiralty Publications and also local Notice to Mariners and Navigational Warnings.

Vessel: Royal Charter  
 Surveyed by: WLH  
 Processed by: WLH  
 Checked by: WLH  
 Surveyed: 16th March 2021  
 Issued: 17th March 2021

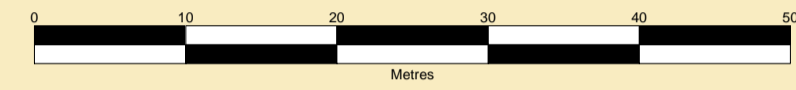


**TOPOGRAPHY**  
 The shore features on this chart are based largely on Ordnance Survey digital mapping data with permission of HMSO. © Crown Copyright 2021. Peel Licence Number 100018033.

**FLATS & SANDBANKS**  
**CAUTION OWING TO FREQUENT CHANGES IN DEPTHS AND POSITIONS OF FLATS AND SANDBANKS THIS CHART SHOULD BE USED WITH CAUTION.**



SCALE 1:500 at A1



**ALFRED DOCK**

Sill level 3.16m below CD'75

**Bascule Bridge**

**Quay**

Sill level 0.80m above CD'75

Sill level 1.02m above CD'75

