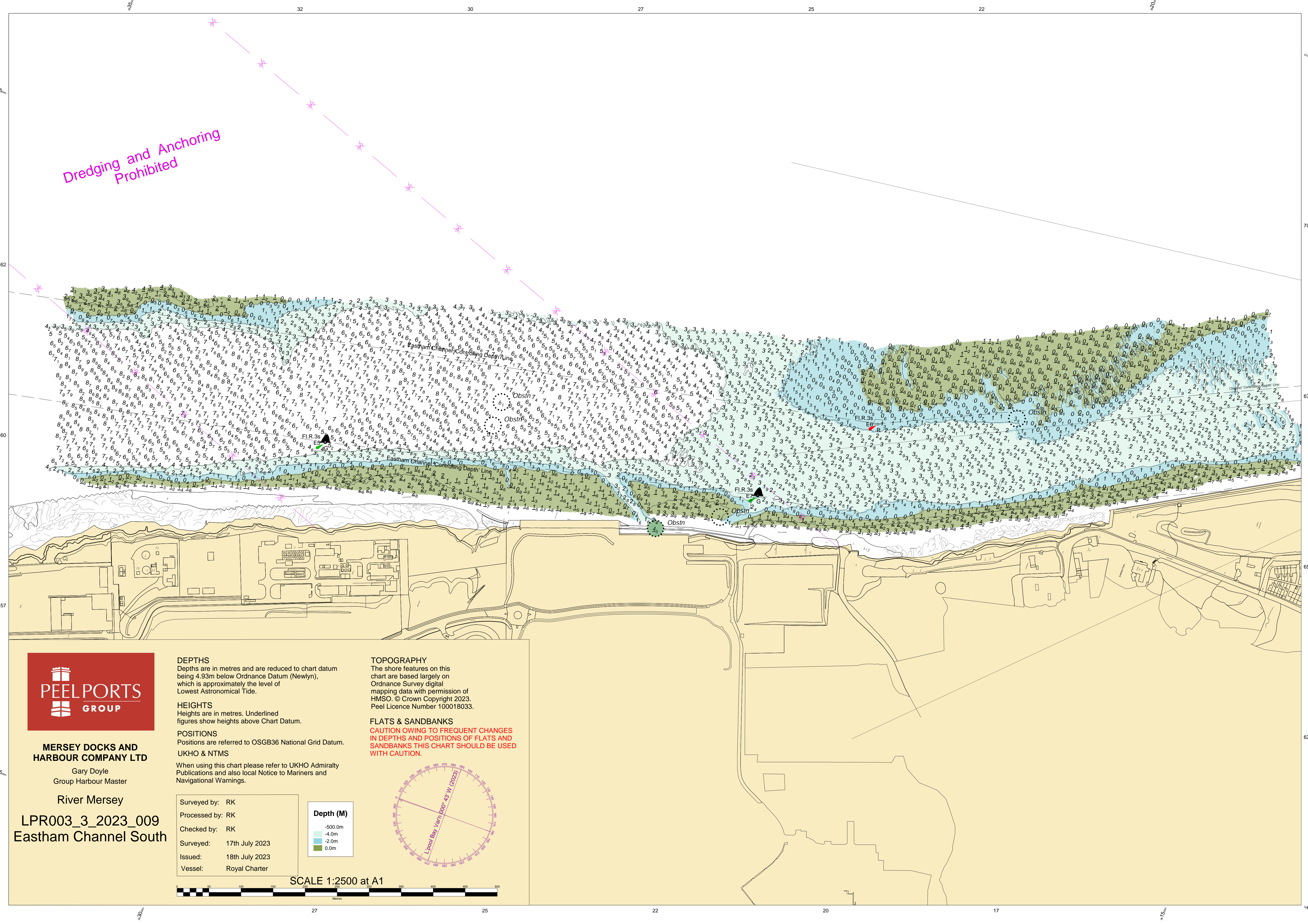


Dredging and Anchoring Prohibited



MERSEY DOCKS AND HARBOUR COMPANY LTD

Gary Doyle
Group Harbour Master

River Mersey

LPR003_3_2023_009
Eastham Channel South

DEPTHS

Depths are in metres and are reduced to chart datum being 4.93m below Ordnance Datum (Newlyn), which is approximately the level of Lowest Astronomical Tide.

HEIGHTS

Heights are in metres. Underlined figures show heights above Chart Datum.

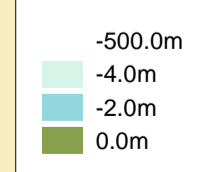
POSITIONS

Positions are referred to OSGB36 National Grid Datum, UKHO & NTMS

When using this chart please refer to UKHO Admiralty Publications and also local Notice to Mariners and Navigational Warnings.

Surveyed by: RK
Processed by: RK
Checked by: RK
Surveyed: 17th July 2023
Issued: 18th July 2023
Vessel: Royal Charter

Depth (M)

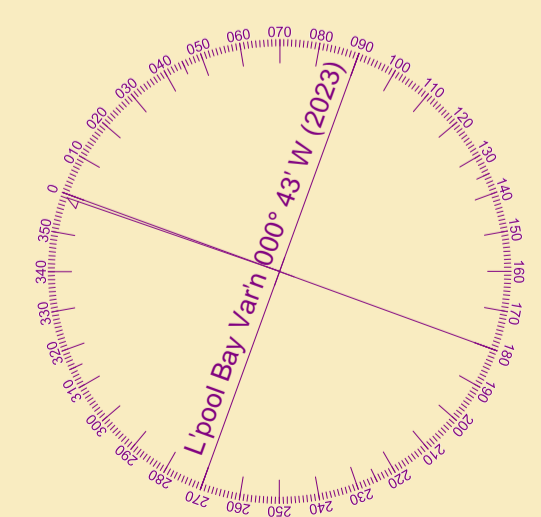


TOPOGRAPHY

The shore features on this chart are based largely on Ordnance Survey digital mapping data with permission of HMSO. © Crown Copyright 2023. Peel Licence Number 100018033.

FLATS & SANDBANKS

CAUTION OWING TO FREQUENT CHANGES IN DEPTHS AND POSITIONS OF FLATS AND SANDBANKS THIS CHART SHOULD BE USED WITH CAUTION.



SCALE 1:2500 at A1

