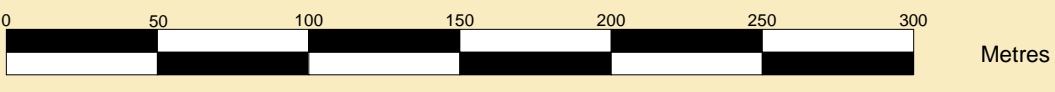




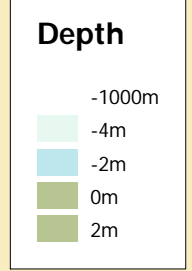
**PORT OF SHEERNESS LIMITED**  
GARY DOYLE  
Group Harbour Master  
  
The Swale  
1026A-1-20  
THE SWALE  
SHEERNESS HARBOUR TO  
CLAY REACH  
SCALE 1:2500 at A0



**DEPTHS**  
Depths are in metres and are reduced to chart datum being 2.90m below Ordnance Datum (Newlyn), which is approximately the level of Lowest Astronomical Tide.

**HEIGHTS**  
Heights are in metres. Underlined figures show heights above Chart Datum.

**DEPTH COLOUR TABLE**

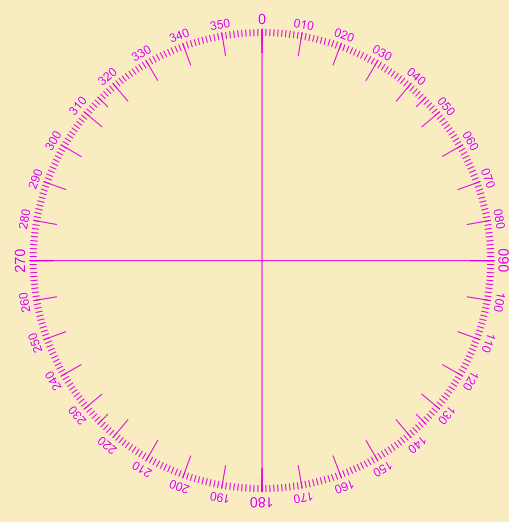


**POSITIONS**  
Positions are referred to OSG536 National Grid Datum.

Surveyed by: CSL  
Processed by: NM  
Checked by: NM  
Surveyed: 21st July 2020  
Issued: 24th August 2020

**TOPOGRAPHY**  
The shore features on this chart are based largely on Ordnance Survey digital mapping data with permission of HMSO. © Crown Copyright 2020. Peel Licence Number 1000180333.

**NOTES**  
While every care has been taken in the preparation of the information relating to the soundings shown on this chart, PEEL PORTS MEDWAY make no warranty as to the accuracy and will not accept any responsibility whatsoever arising from errors and omissions or for any consequence arising therefrom.



REACH

