

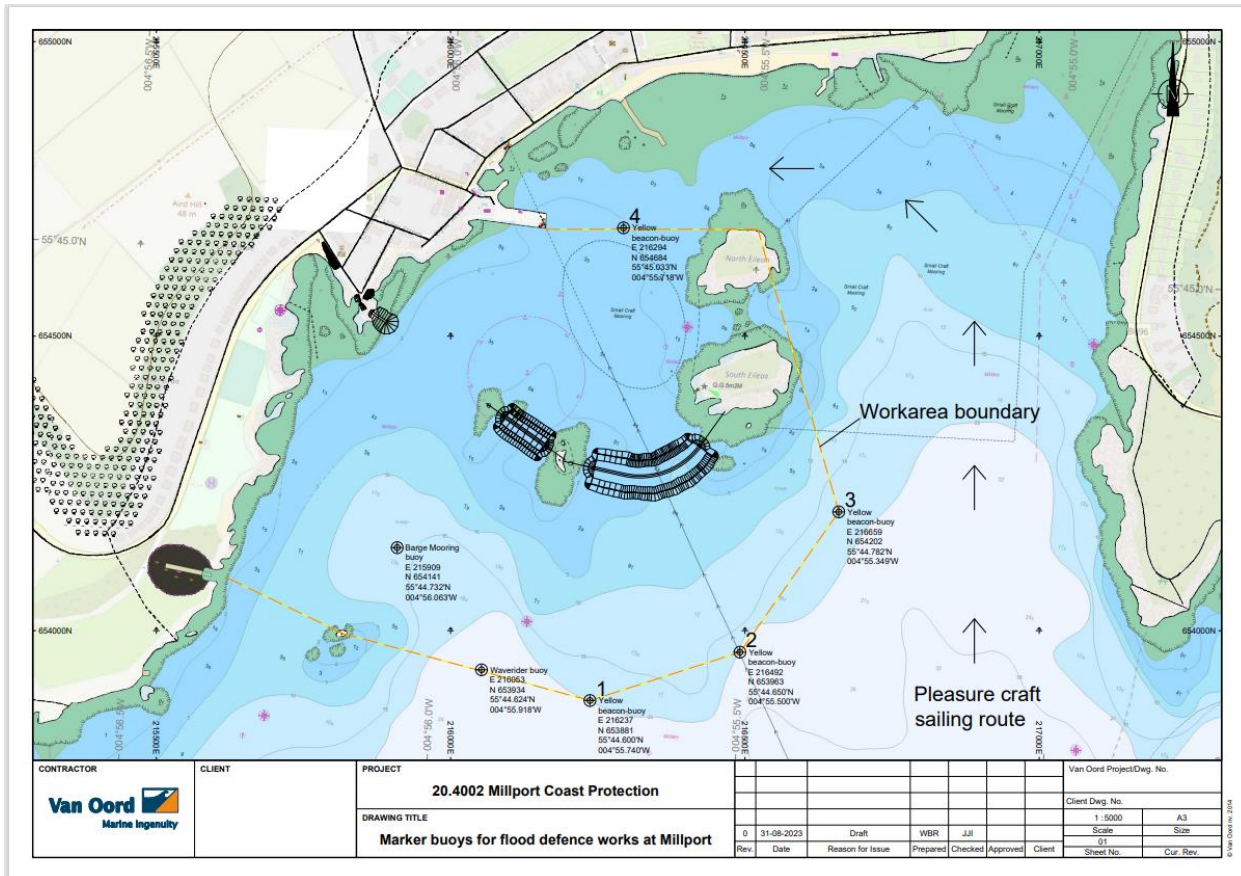
# NOTICE TO MARINERS No 75/23 V2 FIRTH OF CLYDE MILLPORT FLOOD PROTECTION SCHEME BREAKWATER CONSTRUCTION

**Chart 1907**

Mariners are advised that work to construct a new offshore breakwater in Millport Bay are planned from Monday 11<sup>th</sup> September until March 2024 as part of the Millport Flood Protection Scheme. The breakwater will be constructed between the small rock islands of The Leug, The Spoig and The Eileans as illustrated below.

The Millport Harbour Revision Order 2023<sup>1</sup> came into force on 31<sup>st</sup> May 2023 to enable the Flood Prevention Scheme to go ahead. Your attention is drawn to Part 2 Works para 7. *“any rights of navigation within the harbour shall be extinguished to the extent only that the exercise of such rights would be prevented or hindered by the construction, presence, use or maintenance of the works authorised.”*

To this end, navigation within the harbour will be as illustrated below for the duration of the works.



<sup>1</sup> <https://www.legislation.gov.uk/ssi/2023/167/contents/made>

Materials for the breakwater will be transported to site from Hunterston Terminal by tug and barge. A temporary barge mooring buoy will be established for the duration of the works.

A wave monitoring buoy and 4x temporary marker buoys will also be established to mark the work area boundary and mariners are requested to remain outside this area. Entry to and from the harbour is to the East of Millport Bay. The existing shore-based lights will be permanently extinguished when the marker buoys are established. A new lighting scheme will be installed as part of the project and will be communicated in a separate NTM.

Temporary Buoys – Light Characteristics	
Yellow Marker Buoy No 1	Fl.Y 0.5, 1.0 (on, off, on ...)
Yellow Marker Buoy No 2	Fl.Y 0.5, 3.5 (on, off, on ...)
Yellow Marker Buoy No 3	Fl.Y 1.0, 5.5 (on, off, on ...)
Yellow Marker Buoy No 4	Fl.Y 0.5, 5.5 (on, off, on ...)
Barge Mooring Buoy	Unlit
Wave Monitoring Buoy	Fl(5).Y.20s

It should also be noted that visitor moorings to the west of The Eileans will be lifted for the winter period as in previous years.

The breakwater will be constructed using the following vessels:

**DIPPER DREDGER: ABEKO SERVER 1**



SUPPORT VESSEL: PUFFIN ISLAND



ROCK BARGE TRANSPORT: AFON ALAW



SURVEY/CREW CHANGE VESSEL: CRC LODESTAR



Vessels may be restricted in ability to manoeuvre during operational periods. Mariners are requested to proceed with caution when transiting these areas.

Estuary Radio may be contacted on VHF Ch12 or 0151-949 6651 (Recorded Line).