



### MERSEY DOCKS AND HARBOUR COMPANY LTD

Gary Doyle  
Group Harbour Master  
River Mersey  
LPR001\_7\_2023\_001  
Mid-River  
Dumping Ground

**DEPTHS**  
Depths are in metres and are reduced to chart datum being 4.93m below Ordnance Datum (Newlyn), which is approximately the level of Lowest Astronomical Tide.

**HEIGHTS**  
Heights are in metres. Underlined figures show heights above Chart Datum.

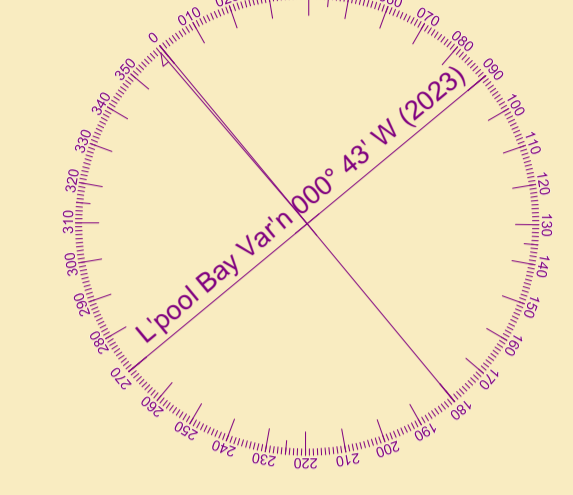
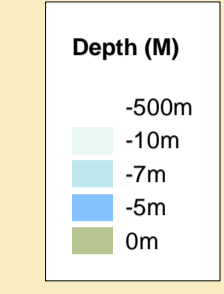
**POSITIONS**  
Positions are referred to OSGB36 National Grid Datum.

**UKHO & NTMS**  
When using this chart please refer to UKHO Admiralty Publications and also local Notice to Mariners and Navigational Warnings.

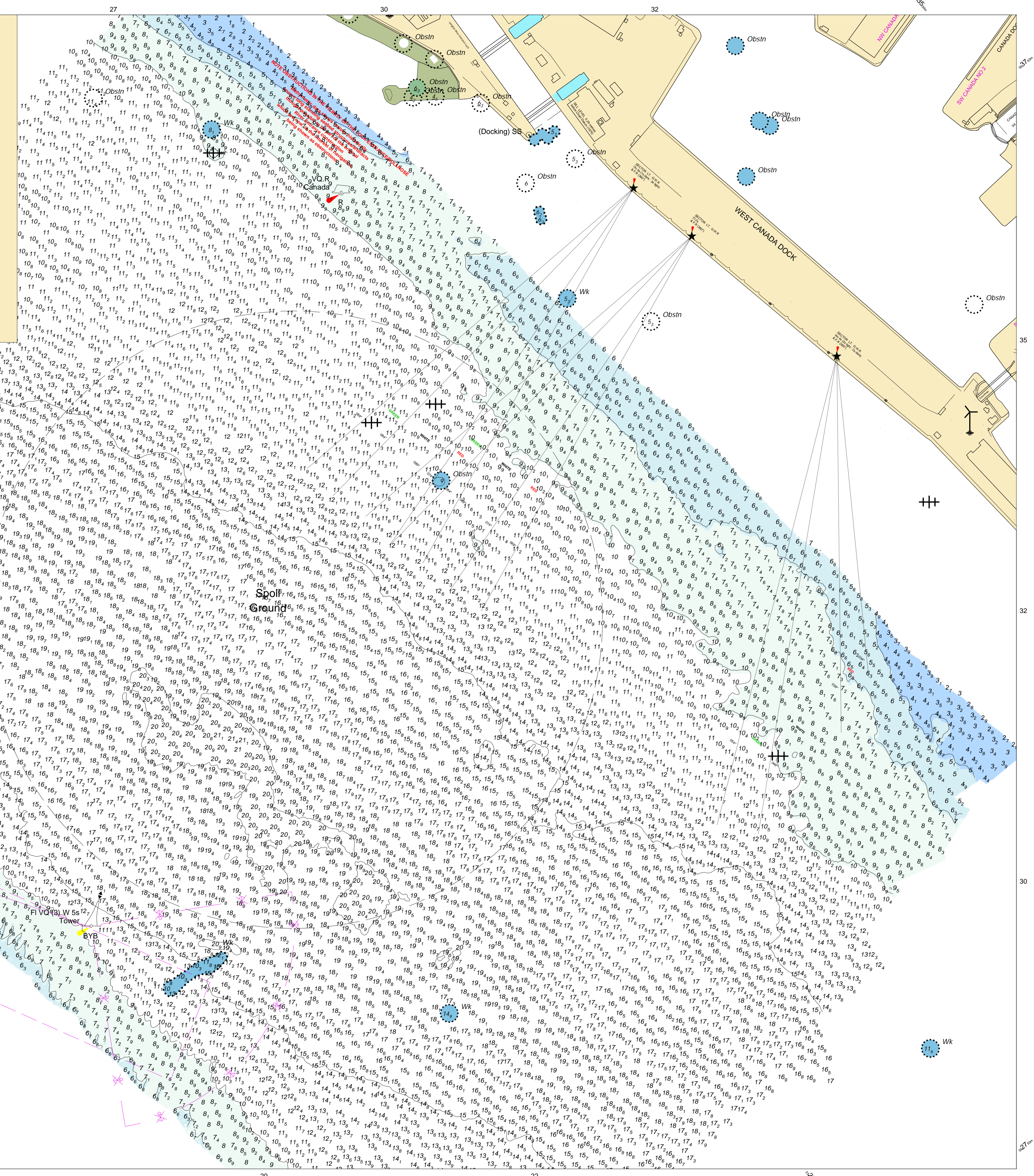
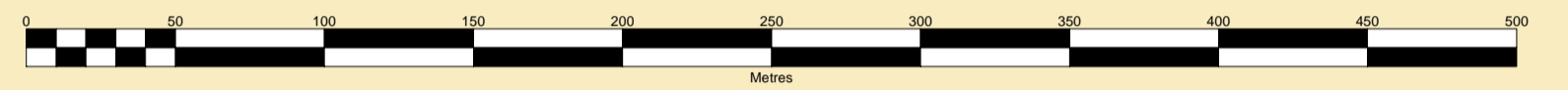
Vessel:	Royal Charter
Surveyed by:	WLH
Processed by:	WLH
Checked by:	WLH
Surveyed:	3rd April 2023
Issued:	4th April 2023

**TOPOGRAPHY**  
The shore features on this chart are based largely on Ordnance Survey digital mapping data with permission of HMSO. © Crown Copyright 2023. Peel Licence Number 100018033.

**FLATS & SANDBANKS**  
**CAUTION OWING TO FREQUENT CHANGES IN DEPTHS AND POSITIONS OF FLATS AND SANDBANKS THIS CHART SHOULD BE USED WITH CAUTION.**



SCALE 1:2500 at A1



47

45

40 13

15

17

20

22

27

30

32

35

37

38